

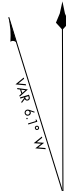
19115
AIRPORT DIAGRAM

AL-305 (FAA)

EXECUTIVE (ORL)
 ORLANDO, FLORIDA

ATIS
 127.25
 EXECUTIVE TOWER*
 118.7 239.0
 GND CON
 121.4 239.0
 CLNC DEL
 128.45

D

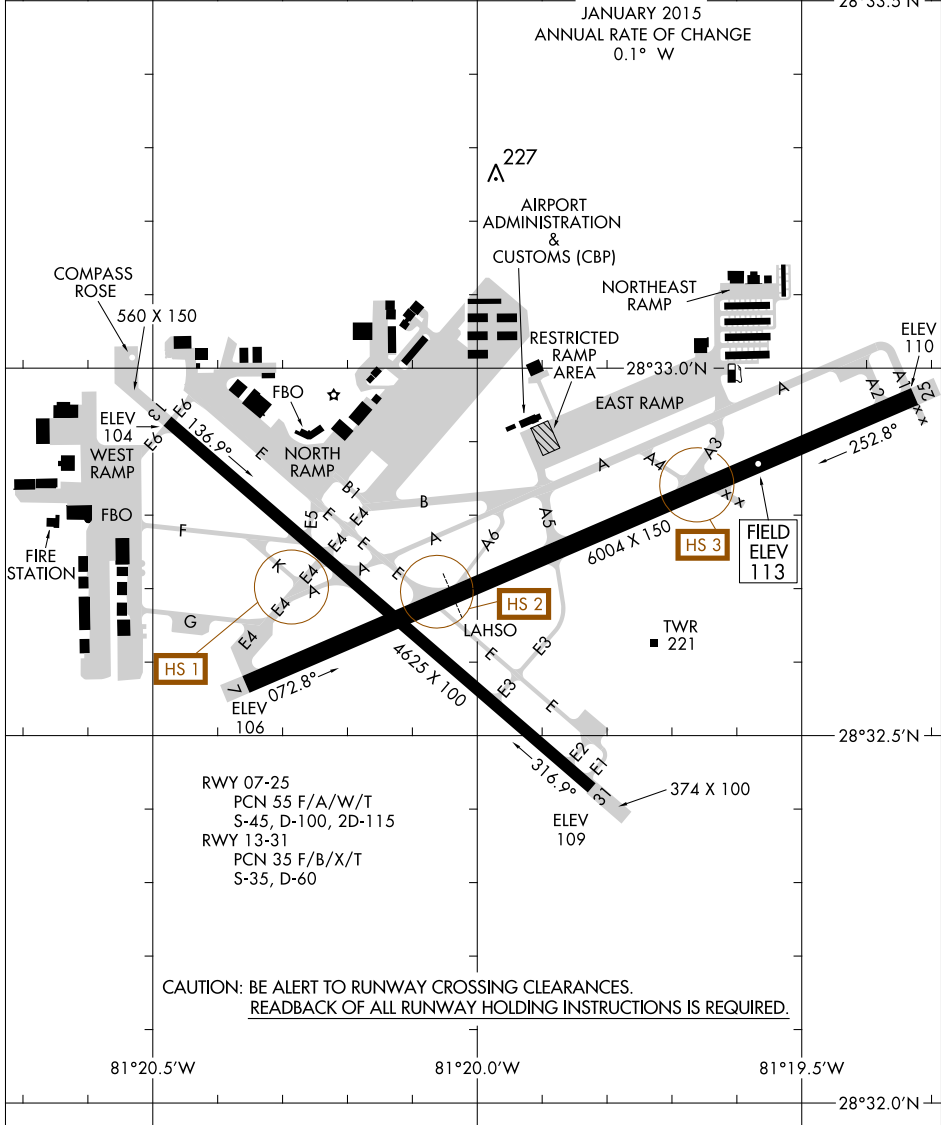


JANUARY 2015
 ANNUAL RATE OF CHANGE
 0.1° W

28°33.5'N

SE-3, 10 OCT 2019 to 07 NOV 2019

SE-3, 10 OCT 2019 to 07 NOV 2019



19115
AIRPORT DIAGRAM

ORLANDO, FLORIDA
EXECUTIVE (ORL)