

LOC I- <b>HLN</b>	APP CRS <b>087°</b>	Rwy Idg TDZE <b>N/A</b>	<b>N/A</b>
<b>110.1</b>		Apt Elev <b>3877</b>	<b>3877</b>

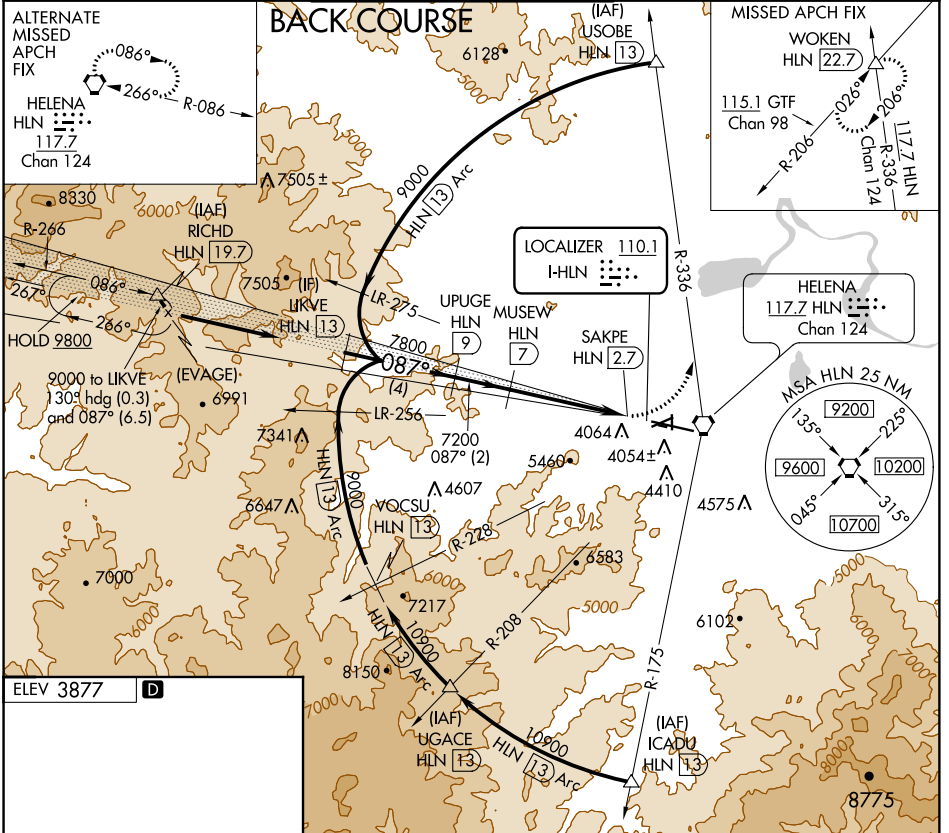
# LOC/DME BC-C

HELENA RGNL (HLN)

**⚠** Circling to Rwy 5, 35 NA at night. When local altimeter setting not received, procedure NA. Visibility reduction by helicopters NA. DME from HLN VORTAC simultaneous reception of I-**HLN** and HLN DME required. When VGSI inop, Circling to Rwy 9, 23 NA at night.

**MISSED APPROACH:** Climbing left turn to 9300 on HLN VORTAC R-336 to WOKEN INT and hold.

ATIS <b>120.4</b>	HELENA APP CON * <b>119.5 229.4</b>	HELENA TOWER * <b>118.3 (CTAF) 257.8</b>	GND CON <b>121.9</b>	UNICOM <b>122.95</b>
-------------------	-------------------------------------	--	----------------------	----------------------



ALTERNATE MISSED APCH FIX

HELENA HLN 117.7 Chan 124

086°

266° R-086

MISSED APCH FIX

WOKEN HLN 22.7

115.1 GTF Chan 98

020°

90°

R-206

R-336

117.7 HLN Chan 124

HELENA 117.7 HLN Chan 124

MSA HLN 25 NM

9200

135°

225°

9600

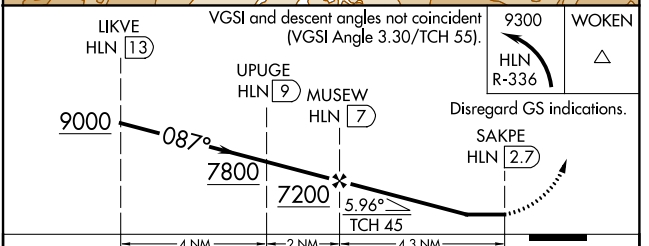
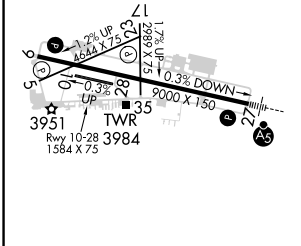
10200

045°

10700

315°

ELEV 3877 **D**



REIL Rws 9, 17 and 35 **⬇**

MIRL Rws 5-23 and 17-35 **⬇**

HIRL Rwy 9-27 **⬇**

CATEGORY	A	B	C	D
CIRCLING	5140-1¼ 1263 (1300-1¼)	5140-1½ 1263 (1300-1½)	5140-3 1263 (1300-3)	NA

NW-1, 10 OCT 2019 to 07 NOV 2019

NW-1, 10 OCT 2019 to 07 NOV 2019