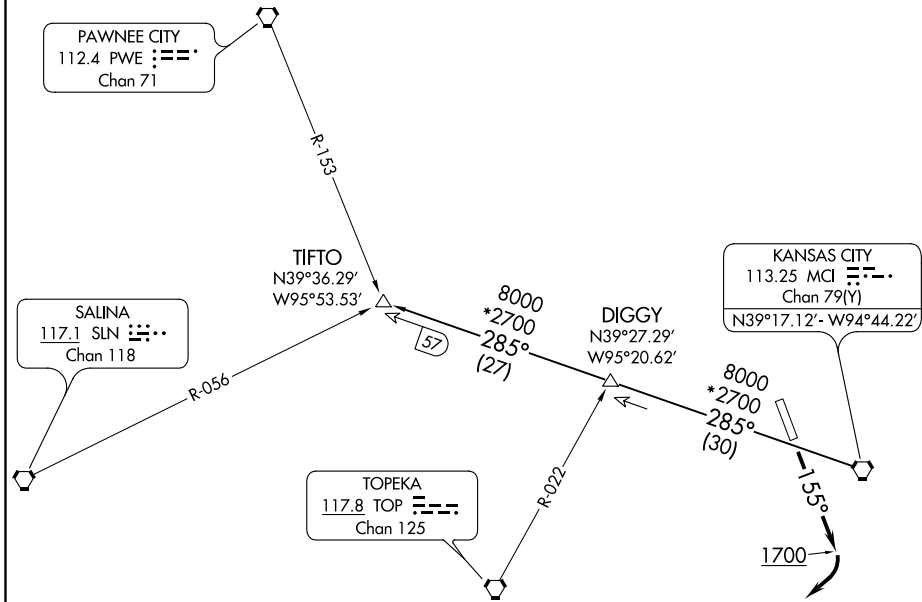


KANSAS CITY DEP CON
124.7 318.1



NOTE: RADAR required.

TAKEOFF MINIMUMS
Rwys 16, 34: Standard.

NOTE: Chart not to scale.

NC-2, 10 OCT 2019 to 07 NOV 2019

NC-2, 10 OCT 2019 to 07 NOV 2019

DEPARTURE ROUTE DESCRIPTION

TAKEOFF RUNWAY 16: Climb heading 155° to 1700 before turning southwest, thence . . .
. . . climb on assigned heading for RADAR vectors to appropriate route. Expect filed altitude 10 minutes after departure.

TAKEOFF RUNWAY 34: Climb on assigned heading for RADAR vectors to appropriate route. Expect filed altitude 10 minutes after departure.

TIFTO TRANSITION (TIFTO6.TIFTO): From over MCI VORTAC on MCI R-285 to TIFTO.