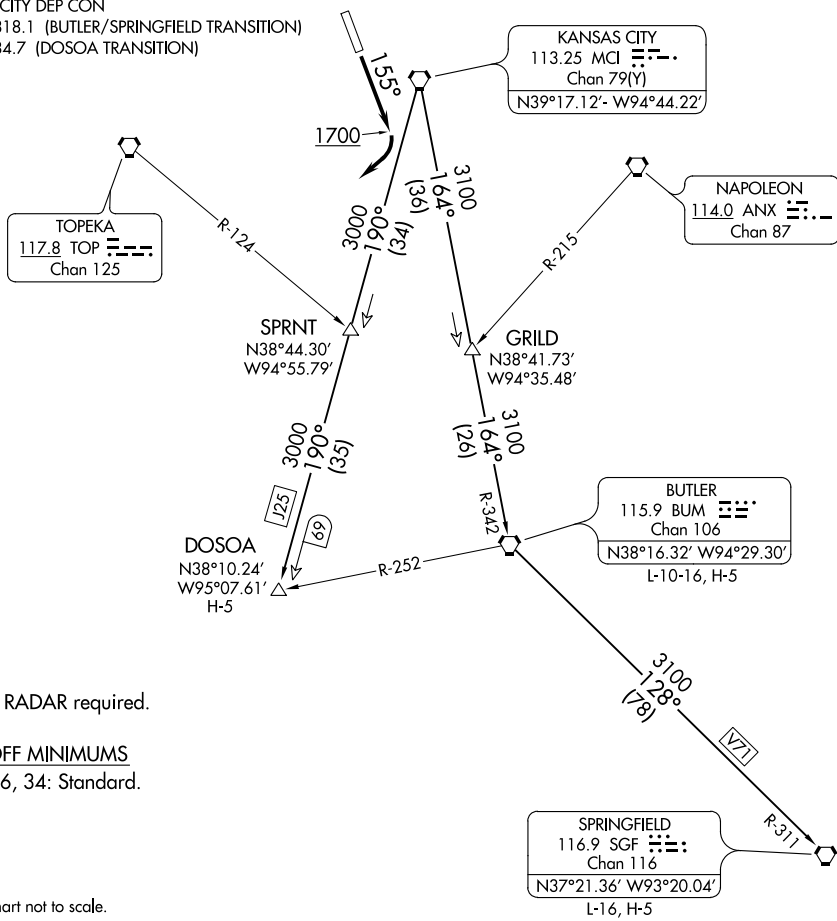


RACER SEVEN DEPARTURE

AL-152 (FAA)

SHERMAN AAF (F'L V)
FORT LEAVENWORTH, KANSAS

KANSAS CITY DEP CON
123.95 318.1 (BUTLER/SPRINGFIELD TRANSITION)
124.7 284.7 (DOSOA TRANSITION)



NOTE: RADAR required.

TAKEOFF MINIMUMS
Rwys 16, 34: Standard.

NOTE: Chart not to scale.

DEPARTURE ROUTE DESCRIPTION

TAKEOFF RUNWAY 16: Climb heading 155° to 1700 before turning southwest, thence. . . . climb on assigned heading for RADAR vectors to appropriate route. Expect filed altitude 10 minutes after departure.

TAKEOFF RUNWAY 34: Climb on assigned heading for RADAR vectors to appropriate route. Expect filed altitude 10 minutes after departure.

BUTLER TRANSITION (RACER7.BUM): From over MCI VORTAC on MCI R-164 and BUM R-342 to BUM VORTAC.

DOSOA TRANSITION (RACER7.DOSOA): From over MCI VORTAC on MCI R-190 to DOSOA.

SPRINGFIELD TRANSITION (RACER7.SGF): From over MCI VORTAC on MCI R-164 and BUM R-342 to BUM VORTAC, then on BUM R-128 and SGF R-311 to SGF VORTAC.

RACER SEVEN DEPARTURE

NC-2, 10 OCT 2019 to 07 NOV 2019

NC-2, 10 OCT 2019 to 07 NOV 2019