

APP CRS <b>335°</b>	Rwy Idg <b>5318</b>
	TDZE <b>769</b>
	Apt Elev <b>771</b>

# RNAV (GPS) RWY 34

SHERMAN AAF (FLV)

RNP APCH

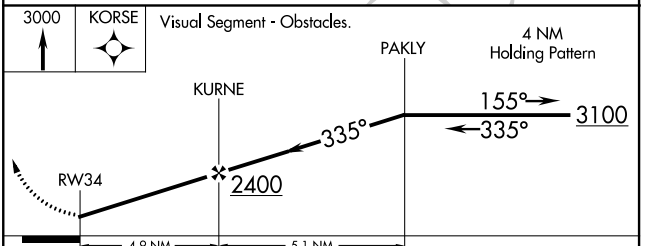
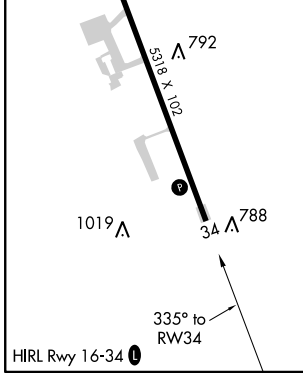
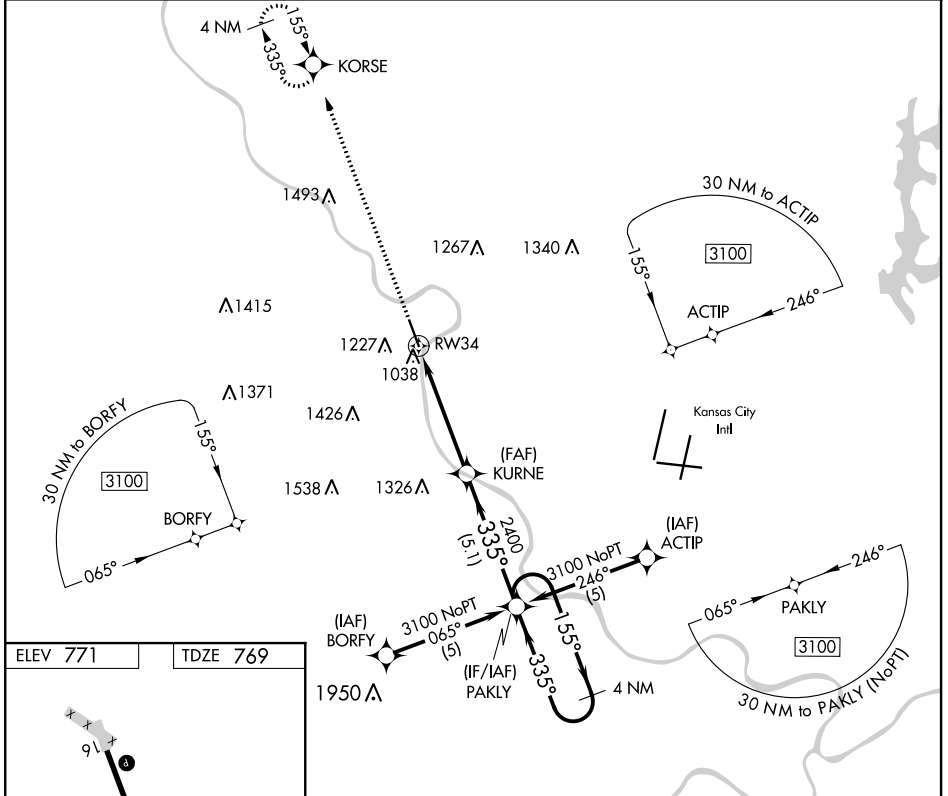
**▼** When local altimeter setting not received, use Kansas City Intl altimeter setting.

**▲ NA** Circling not authorized west of Rwy 16-34. Procedure NA at night.

**MISSED APPROACH:**  
Climb to 3000 direct KORSE and hold.

KANSAS CITY APP CON  
**124.7 318.1**

CTAF  
**126.2**



CATEGORY	A	B	C	D
LNAV MDA	1560-1 791 (800-1)	1560-1¼ 791 (800-1¼)	1560-2¼ 791 (800-2¼)	NA
CIRCLING	1560-1 789 (800-1)	1560-1¼ 789 (800-1¼)	1560-2¼ 789 (800-2¼)	NA

NC-2, 10 OCT 2019 to 07 NOV 2019

NC-2, 10 OCT 2019 to 07 NOV 2019