

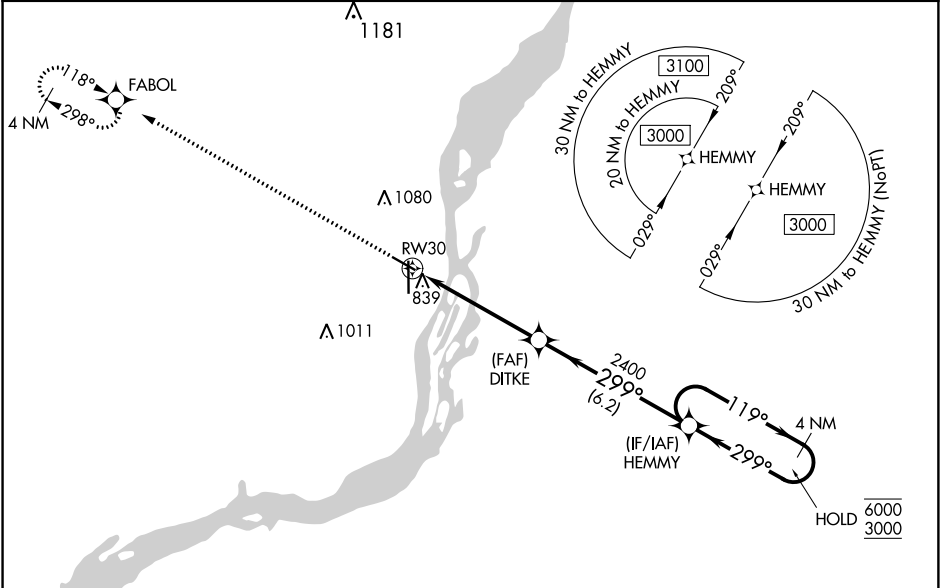
WAAS CH <b>45535</b> <b>W30A</b>	APP CRS <b>299°</b>	Rwy Idg <b>4850</b> TDZE <b>697</b> Apt Elev <b>698</b>
--	------------------------	---

# RNAV (GPS) RWY 30

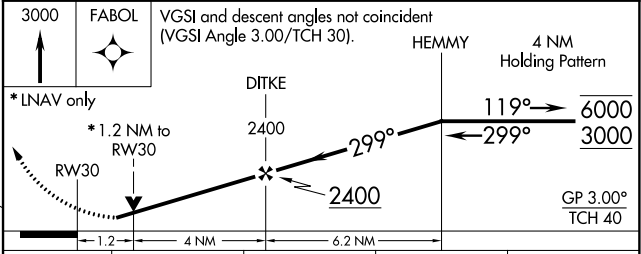
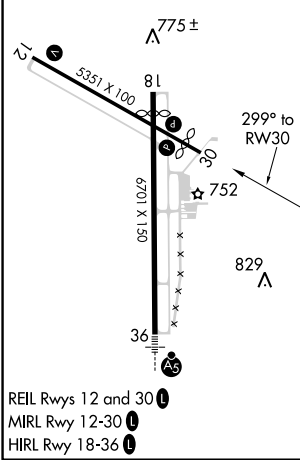
SOUTHEAST IOWA RGNL (B.R.L.)

RNP APCH.	MISSED APPROACH: Climb to 3000 direct FABOL and hold.
<p>Rwy 30 helicopter visibility reduction below 3/4 SM NA. For uncompensated Baro-VNAV systems, procedure NA below -21°C or above 54°C.</p> <p>-28°C/-18°F</p>	

ASOS <b>118.025</b>	CHICAGO CENTER <b>135.6 370.95</b>	UNICOM <b>123.0 (CTAF)</b>
------------------------	---------------------------------------	-------------------------------



ELEV 698	<b>D</b> TDZE 697
----------	-------------------



CATEGORY	A	B	C	D
LPV DA	995-1 298 (300-1)			NA
LNAV/VNAV DA	989-1 292 (300-1)			NA
LNAV MDA	1100-1 403 (500-1)	1100-1 1/8 403 (500-1 1/8)		NA
<b>C</b> CIRCLING	1180-1 482 (500-1)	1380-2 682 (800-2)		NA

NC-3, 10 OCT 2019 to 07 NOV 2019

NC-3, 10 OCT 2019 to 07 NOV 2019