

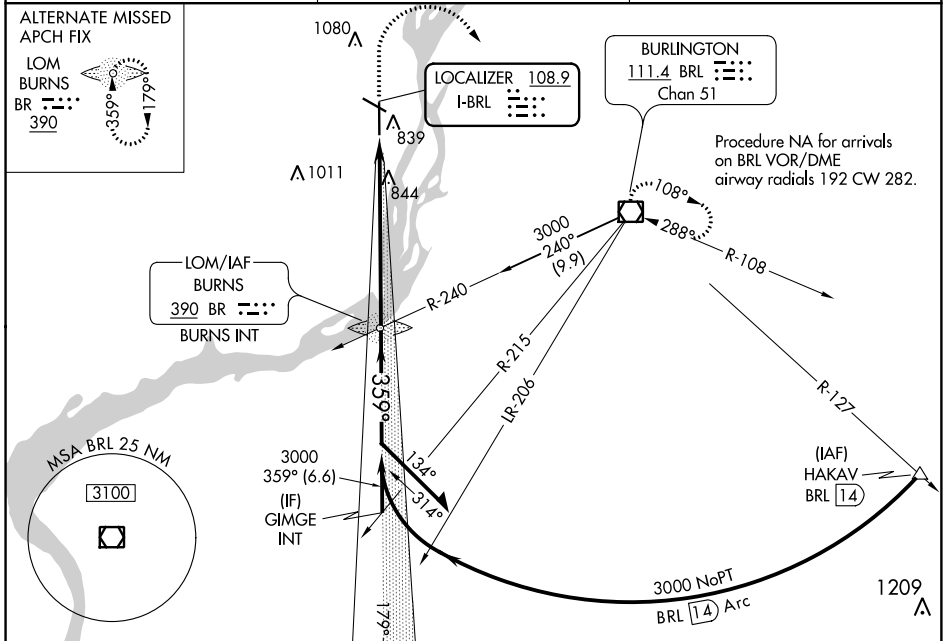
LOC I-BRL 108.9	APP CRS 359°	Rwy Idg TDZE Apt Elev	6102 694 698
---------------------------	------------------------	-----------------------------	---

ILS or LOC RWY 36

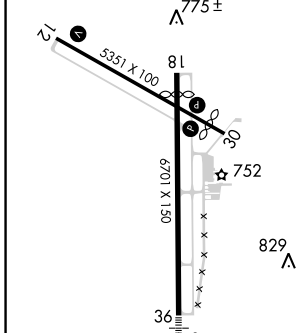
SOUTHEAST IOWA RGNL (B.R.L)

<p>NA</p> <p>-28°C/-18°F</p>	<p>MALSR</p>	<p>MISSED APPROACH: Climb to 2800 then climbing right turn to 3000 direct BRL VOR/DME and hold.</p>
------------------------------	--------------	---

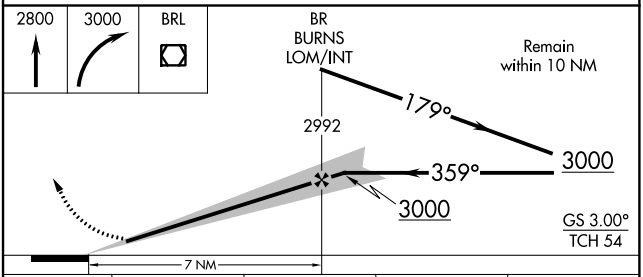
ASOS 118.025	CHICAGO CENTER 135.6 370.95	UNICOM 123.0 (CTAF)
------------------------	---------------------------------------	-------------------------------



ELEV 698	TDZE 694
----------	----------



REIL Rwy 12 and 30	MIRL Rwy 12-30	HIRL Rwy 18-36			
FAF to MAP 7 NM					
Knots	60	90	120	150	180
Min:Sec	7:00	4:40	3:30	2:48	2:20



CATEGORY	A	B	C	D
S-ILS 36	894-1/2 200 (200-1/2)			
S-LOC 36	1140-1/2	446 (500-1/2)	1140-7/8 446 (500-7/8)	1140-1 446 (500-1)
CIRCLING	1180-1	482 (500-1)	1380-2 682 (700-2)	1380-2 1/4 682 (700-2 1/4)

NC-3, 10 OCT 2019 to 07 NOV 2019

NC-3, 10 OCT 2019 to 07 NOV 2019