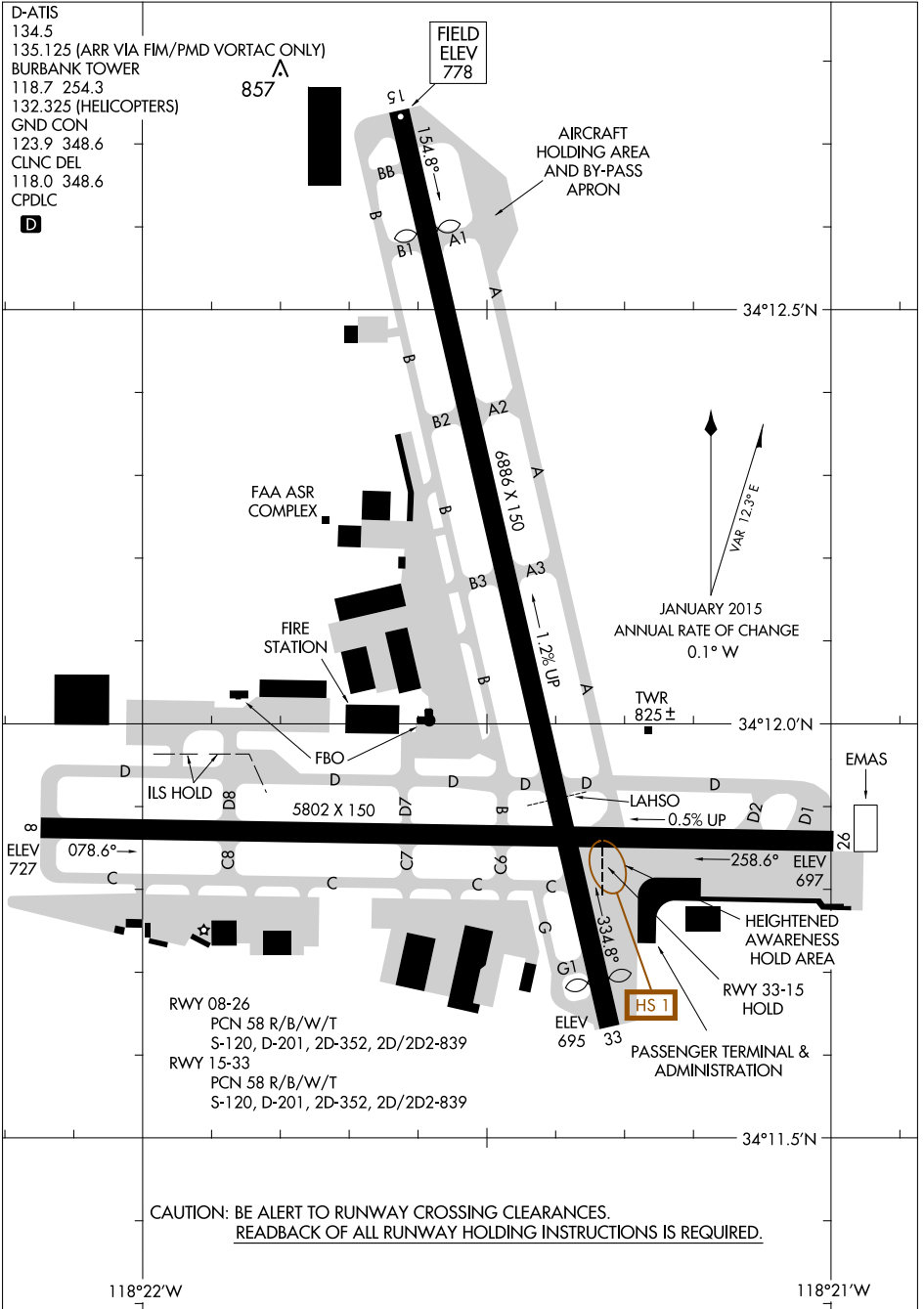


AIRPORT DIAGRAM

19059

BOB HOPE (BUR)
BURBANK, CALIFORNIA

AL-67 (FAA)



D-ATIS
134.5
135.125 (ARR VIA FIM/PMD VORTAC ONLY)
BURBANK TOWER
118.7 254.3
132.325 (HELICOPTERS)
GND CON
123.9 348.6
CLNC DEL
118.0 348.6
CPDLC



FIELD
ELEV
778

857

AIRCRAFT
HOLDING AREA
AND BY-PASS
APRON

34°12.5'N

FAA ASR
COMPLEX

FIRE
STATION

FBO

JANUARY 2015
ANNUAL RATE OF CHANGE
0.1° W

TWR
825 ±

34°12.0'N

ILS HOLD

5802 X 150

LAHSO
0.5% UP

EMAS

ELEV
727

078.6°

258.6° ELEV
697

RWY 08-26
PCN 58 R/B/W/T
S-120, D-201, 2D-352, 2D/2D2-839

RWY 15-33
PCN 58 R/B/W/T
S-120, D-201, 2D-352, 2D/2D2-839

HEIGHTENED
AWARENESS
HOLD AREA

RWY 33-15
HOLD

HS 1
PASSENGER TERMINAL &
ADMINISTRATION

ELEV
695

34°11.5'N

CAUTION: BE ALERT TO RUNWAY CROSSING CLEARANCES.
READBACK OF ALL RUNWAY HOLDING INSTRUCTIONS IS REQUIRED.

118°22'W

118°21'W

AIRPORT DIAGRAM

19059

BURBANK, CALIFORNIA
BOB HOPE (BUR)

SW-3, 10 OCT 2019 to 07 NOV 2019

SW-3, 10 OCT 2019 to 07 NOV 2019