

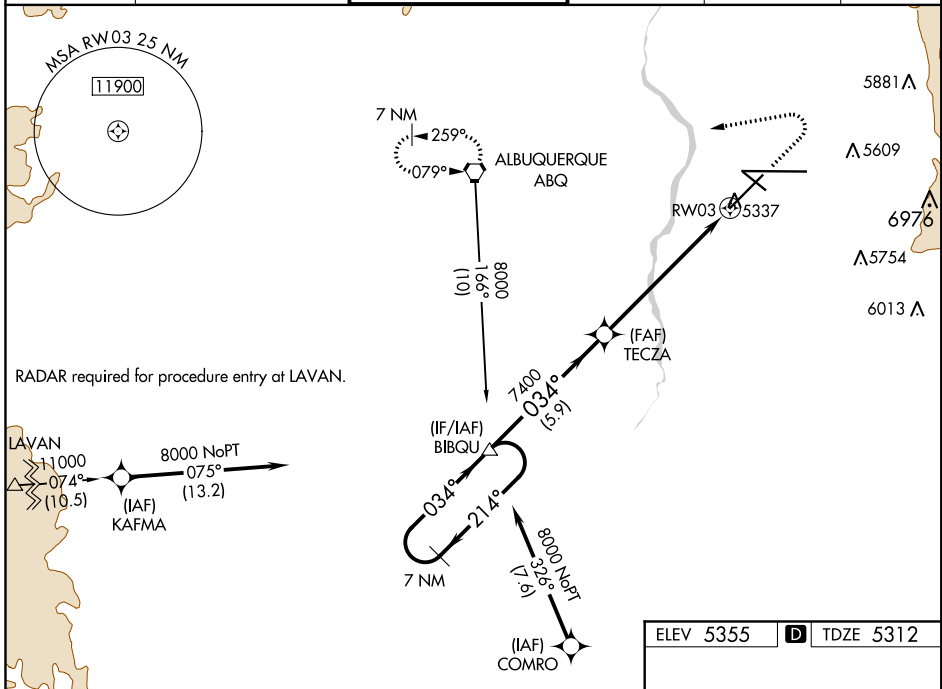
WAAS CH <b>78137</b> <b>W03A</b>	APP CRS <b>034°</b>	Rwy Idg TDZE Apt Elev	<b>10000</b> <b>5312</b> <b>5355</b>
--	------------------------	-----------------------------	--

# RNAV (GPS) Y RWY 3

ALBUQUERQUE INTL SUNPORT (ABQ)

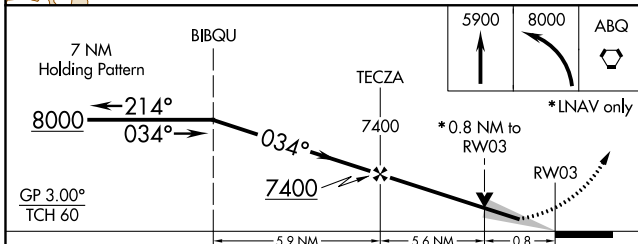
<p>DME/DME RNP-0.3 NA. For uncompensated Baro-VNAV systems, LNAV/VNAV NA below -13°C (9°F) or above 45°C (114°F).</p>	<p>MALSR</p>	<p>MISSED APPROACH: Climb to 5900 then climbing left turn to 8000 direct ABQ VORTAC and hold, continue climb-in-hold to 8000.</p>

D-ATIS <b>118.0 257.7</b>	ALBUQUERQUE APP CON <b>123.9 354.1</b>	ALBUQUERQUE TOWER <b>120.3 351.9</b>	GND CON <b>121.9 348.6</b>	CLNC DEL <b>119.2 259.3</b>	CPDLC
------------------------------	---	---	-------------------------------	--------------------------------	-------

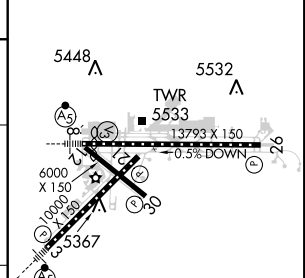


SW-1, 10 OCT 2019 to 07 NOV 2019

SW-1, 10 OCT 2019 to 07 NOV 2019



ELEV 5355	<b>D</b>	TDZE 5312
-----------	----------	-----------



CATEGORY	A	B	C	D
LPV DA		5512/24	200 (200-½)	
LNAV/VNAV DA		5562/24	250 (300-½)	
LNAV MDA		5620/24	308 (300-½)	
<b>C</b> CIRCLING	5840-1 485 (500-1)	5920-1 565 (600-1)	5940-1½ 585 (600-½)	6460-3 1105 (1200-3)

MIRL Rwy 12-30  
TDZ/CL Rwy 3 and 8  
HIRL Rwy 3-21 and 8-26  
REIL Rwy 21, 26, and 30