

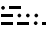
(LAVAN.LAVAN3) 17117

# LAVAN THREE ARRIVAL

ST-12 (FAA)

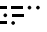
ALBUQUERQUE, NEW MEXICO

ALBUQUERQUE APP CON  
 123.9 354.1  
 ALBUQUERQUE TOWER  
 120.3 351.9  
 GND CON  
 121.9 348.6  
 D-ATIS  
 118.0 257.7

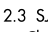
ALBUQUERQUE  
 113.2 ABQ   
 Chan 79  
 N35°02.63'-W106°48.98'

 DOUBLE EAGLE II

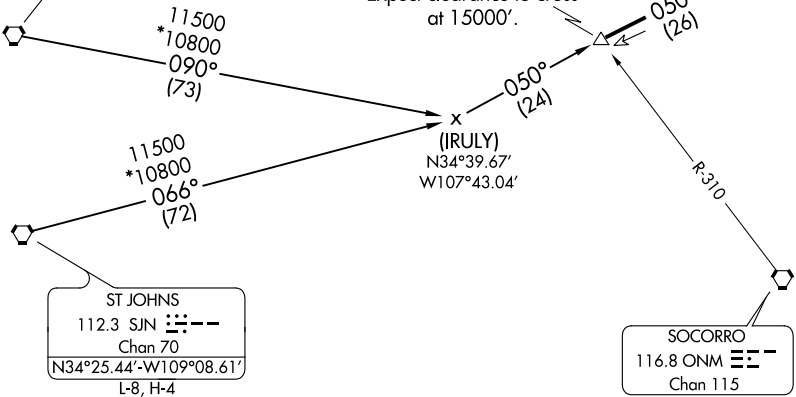
 ALBUQUERQUE INTL SUNPORT/  
KIRTLAND AFB

ZUNI  
 113.4 ZUN   
 Chan 81  
 N34°57.95'-W109°09.27'  
 L-8, H-4

LAVAN  
 N34°50.77'-W107°17.09'  
 Cross at 300K IAS or less.  
**TURBOJET VERTICAL NAVIGATION**  
**PLANNING INFORMATION**  
 Expect clearance to cross  
 at 15000'.

ST JOHNS  
 112.3 SJN   
 Chan 70  
 N34°25.44'-W109°08.61'  
 L-8, H-4

SOCORRO  
 116.8 ONM   
 Chan 115



SW-1, 10 OCT 2019 to 07 NOV 2019

SW-1, 10 OCT 2019 to 07 NOV 2019

NOTE: Chart not to scale.

ST. JOHNS TRANSITION (SJN.LAVAN3): From over SJN VORTAC via SJN R-066 and ABQ R-230 to LAVAN DME/INT. Thence....  
ZUNI TRANSITION (ZUN.LAVAN3): From over ZUN VORTAC via ZUN R-090 and ABQ R-230 to LAVAN DME/INT. Thence....  
 ...From over LAVAN fix/INT via ABQ R-230 to ABQ VORTAC. Expect vectors to final approach course after passing LAVAN.

# LAVAN THREE ARRIVAL

(LAVAN.LAVAN3) 22JUL93

ALBUQUERQUE, NEW MEXICO