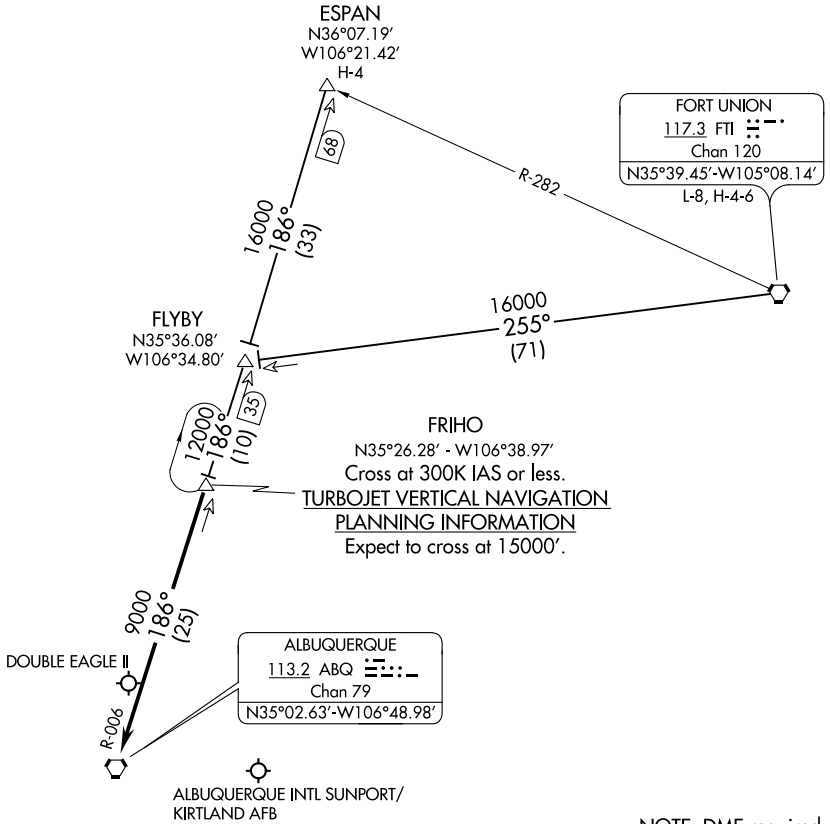


SW-1, 10 OCT 2019 to 07 NOV 2019

SW-1, 10 OCT 2019 to 07 NOV 2019



NOTE: DME required.
NOTE: Chart not to scale.

ESPAN TRANSITION (ESPAN.FRIHO4): From over ESPAN DME fix via ABQ R-006 to FRIHO DME fix, thence....

FORT UNION TRANSITION (FTI.FRIHO4): From over FTI VORTAC via FTI R-255 and ABQ R-006 to FRIHO DME fix, thence....

.... From over FRIHO DME fix via ABQ R-006 to ABQ VORTAC. Expect vectors to final approach course after passing FRIHO DME fix.