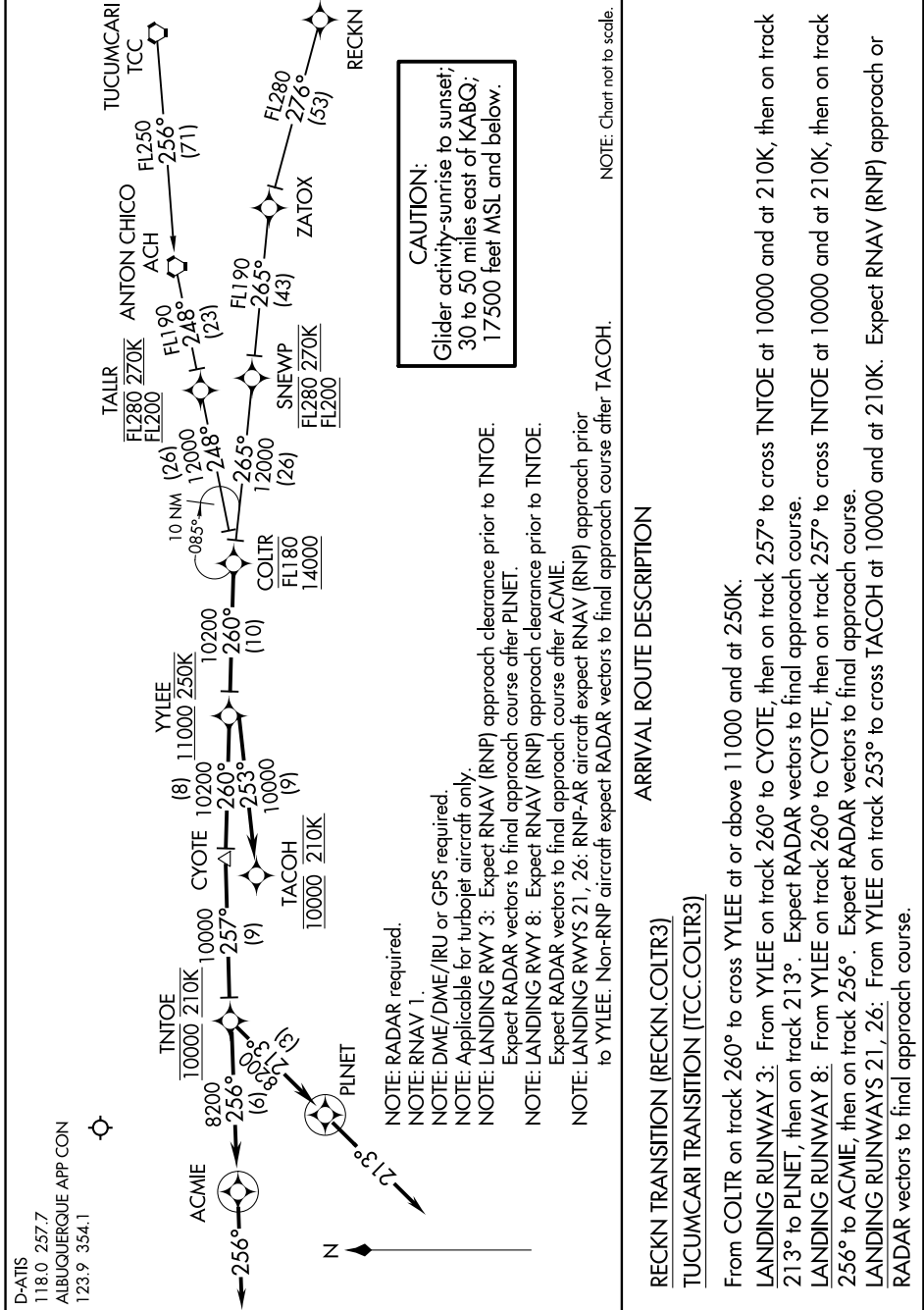


6102 AON ZD of 61400 10.1 '1-MS



NOTE: Chart not to scale.

ARRIVAL ROUTE DESCRIPTION

RECKN TRANSITION (RECKN.COLTR3)

TUCUMCARI TRANSITION (TCC.COLTR3)

From COLTR on track 260° to cross YLEEE at or above 11000 and at 250K.

**LANDING RUNWAY 3:** From YLEEE on track 260° to CYOTE, then on track 257° to cross TINTOE at 10000 and at 210K, then on track 213° to PLINET, then on track 213°. Expect RADAR vectors to final approach course.

**LANDING RUNWAY 8:** From YLEEE on track 260° to CYOTE, then on track 257° to cross TINTOE at 10000 and at 210K, then on track 256° to ACME, then on track 256°. Expect RADAR vectors to final approach course.

**LANDING RUNWAYS 21, 26:** From YLEEE on track 253° to cross TACOHO at 10000 and at 210K. Expect RNAV (RNP) approach or RADAR vectors to final approach course.