

# BOSQE THREE DEPARTURE (RNAV)

610Z MON 07 1619 OCT 2019 11:17MS

D-ATIS 118.0 257.7  
CLNC DEL 119.2 259.3  
GND CON 121.9 348.6  
ALBUQUERQUE TOWER 120.3 351.9  
ALBUQUERQUE DEP CON 123.9 354.1

## DEPARTURE ROUTE DESCRIPTION

**TAKEOFF RUNWAY 21:** Climb heading 214° to 5860, then climb direct JETOK, cross JETOK at or below 9000, then on track 203° to cross BOSQE at or above 10000, thence. . . .

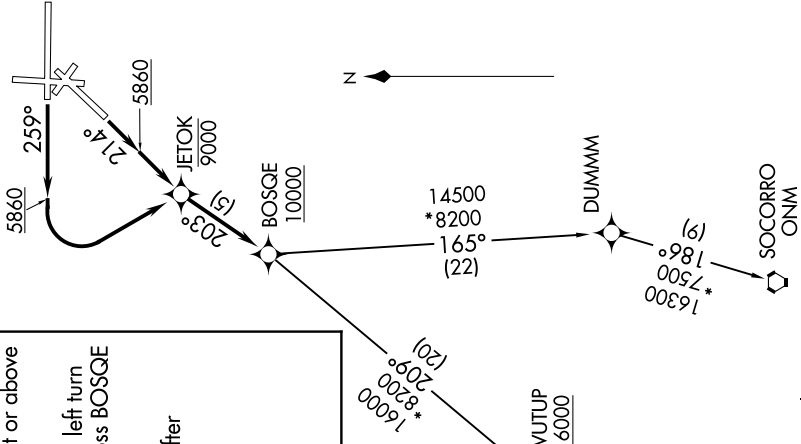
**TAKEOFF RUNWAY 26:** Climb heading 259° to 5860, then climbing left turn direct JETOK, cross JETOK at or below 9000, then on track 203°, cross BOSQE at or above 10000, thence. . . .

. . . . (transition). Maintain FL200. Expect filed altitude 10 minutes after departure.

LAMSE TRANSITION (BOSQE3.LAMSE)  
SAINT JOHNS TRANSITION (BOSQE3.SJN)  
SOCORRO TRANSITION (BOSQE3.ONM)

**TAKEOFF MINIMUMS:**  
Rwy 21: Standard with minimum climb of 500' per NM to 6000, then minimum climb of 478' per NM to 12400.  
Rwy 26: Standard with minimum climb of 500' per NM to 6000, then minimum climb of 373' per NM to 13300.

**TOP ALTITUDE:  
FL200**



# BOSQE THREE DEPARTURE (RNAV)

(BOSQE3.BOSQE) 25JUN15