

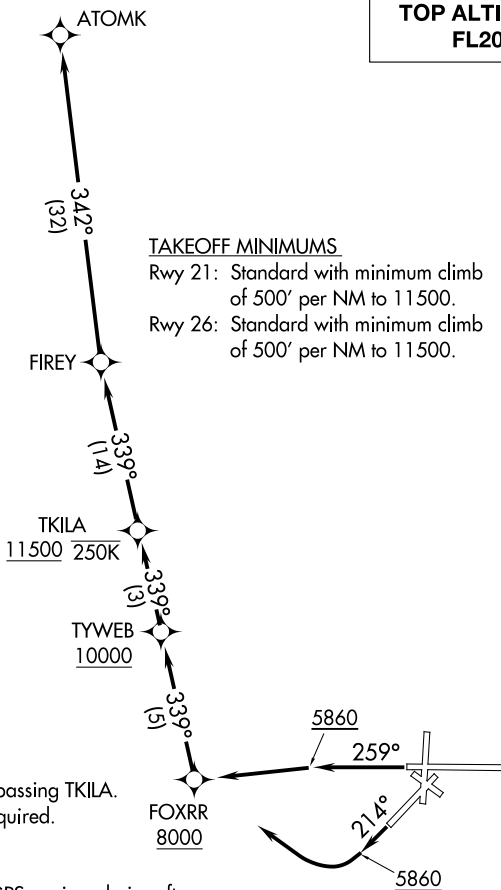
(ATOMK3.ATOMK) 17285

ATOMK THREE DEPARTURE (RNAV) AL-12 (FAA)

ALBUQUERQUE INTL SUNPORT (ABQ)
ALBUQUERQUE, NEW MEXICO

D-ATIS
118.0 257.7
CLNC DEL
119.2 259.3
CPDLC
GND CON
121.9 348.6
ALBUQUERQUE TOWER
120.3 351.9
ALBUQUERQUE DEP CON
127.4 253.5

**TOP ALTITUDE:
FL200**



TAKEOFF MINIMUMS

Rwy 21: Standard with minimum climb of 500' per NM to 11500.

Rwy 26: Standard with minimum climb of 500' per NM to 11500.

NOTE: Do not exceed 250K until passing TKILA.

NOTE: DME/DME/IRU or GPS required.

NOTE: For turbojet aircraft only.

NOTE: RNAV 1.

NOTE: RADAR required for non-GPS equipped aircraft.

NOTE: If unable to accept climb gradient, advise ATC on initial contact.

NOTE: Chart not to scale.

DEPARTURE ROUTE DESCRIPTION

TAKEOFF RUNWAY 21: Climb heading 214° to 5860, then right turn direct FOXR, cross FOXR at or above 8000, then on track 339° to TYWEB, cross TYWEB at or above 10000, then on track 339° to TKILA, cross TKILA at or above 11500, then on depicted route to ATOMK, thence. . . .

TAKEOFF RUNWAY 26: Climb heading 259° to 5860, then direct FOXR, cross FOXR at or above 8000, then on track 339° to TYWEB, cross TYWEB at or above 10000, then on track 339° to TKILA, cross TKILA at or above 11500, then on depicted route to ATOMK, thence

. . . . Maintain FL200. Expect filed altitude 10 minutes after departure.

ATOMK THREE DEPARTURE (RNAV)
(ATOMK3.ATOMK) 25JUN15

ALBUQUERQUE, NEW MEXICO
ALBUQUERQUE INTL SUNPORT (ABQ)

SW-1, 10 OCT 2019 to 07 NOV 2019

SW-1, 10 OCT 2019 to 07 NOV 2019