

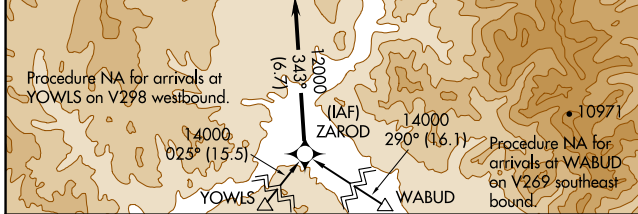
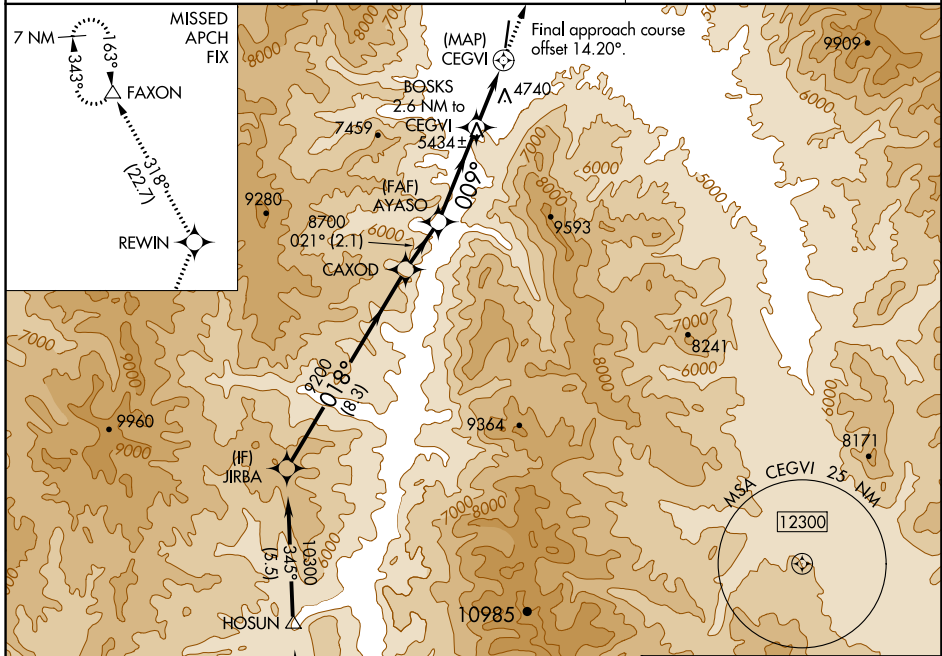
APP CRS <b>009°</b>	Rwy Idg TDZE Apt Elev	<b>N/A</b> <b>N/A</b> <b>4044</b>
------------------------	-----------------------------	---

# RNAV (GPS)-D

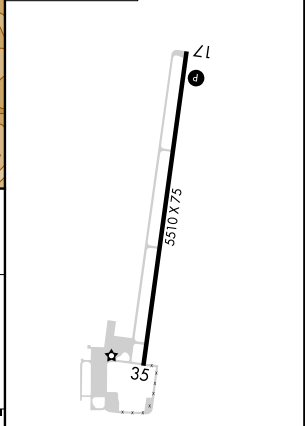
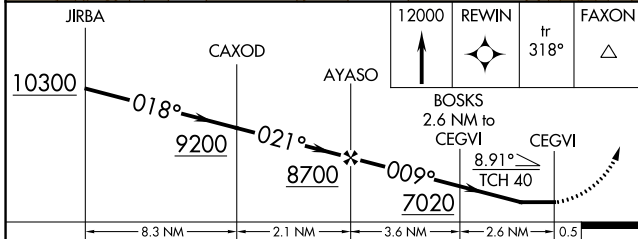
LEMHI COUNTY (SMN)

<p><b>V</b> Circling Rwy 35 NA at night. <b>A</b> NA <b>88</b> -14°C</p>	<p>MISSED APPROACH: Climb to 12000 direct REWIN and on track 318° to FAXON and hold, continue climb-in-hold to 12000.</p>
--	---

AWOS-3PT <b>135.075</b>	SALT LAKE CENTER <b>132.4 338.3</b>	UNICOM <b>122.8 (CTAF) 0</b>
----------------------------	--	---------------------------------



ELEV 4044



CATEGORY	A	B	C	D
<b>C</b> CIRCLING	6000-1¼ 1956 (2000-1¼)	6000-1½ 1956 (2000-1½)	6220-3 2176 (2200-3)	NA

REIL Rwy 17 and 35  
MIRL Rwy 17-35

NW-1, 12 SEP 2019 to 10 OCT 2019

NW-1, 12 SEP 2019 to 10 OCT 2019