

APP CRS 126°	Rwy Idg TDZE Apt Elev	N/A N/A 5940
------------------------	-----------------------------	---

RNAV (GPS)-A

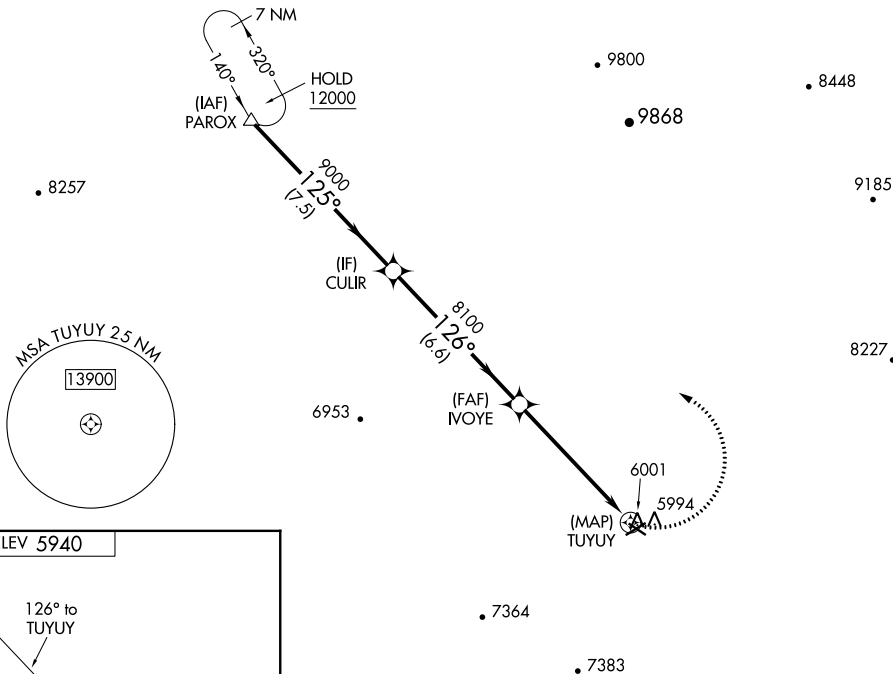
HOPKINS FIELD (AIB)

<p>▽ DME/DME RNP- 0.3 NA. If local altimeter setting not received, procedure NA. △ NA</p>	<p>MISSED APPROACH: Climbing left turn to 12000 direct PAROX and hold, continue climb-in-hold to 12000.</p>
---	---

<p>AWOS-3 132.525</p>	<p>DENVER CENTER 125.35 354.05</p>	<p>UNICOM 122.8 (CTAF)</p>
----------------------------------	---	---------------------------------------

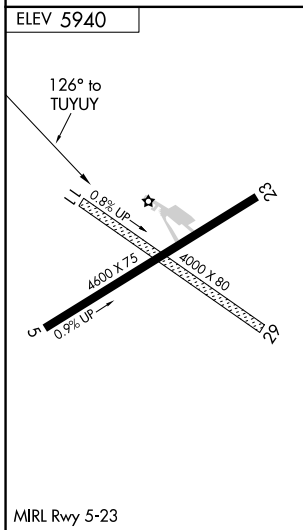
All arrivals via V244 descend to 12000 in PAROX holding pattern before departing PAROX.
NoPT for arrival at PAROX on V391 southbound.

△ 9752 ±



SW-1, 12 SEP 2019 to 10 OCT 2019

SW-1, 12 SEP 2019 to 10 OCT 2019



	PAROX	CULIR	IVOYE	TUYUY
	12000	9000	8100	
Procedure Turn	NA			
	7.5 NM	6.6 NM	5.8 NM	
CATEGORY	A	B	C	D
CIRCLING	6600-1	660 (700-1)	6600-1¾ 660 (700-1¾)	NA