

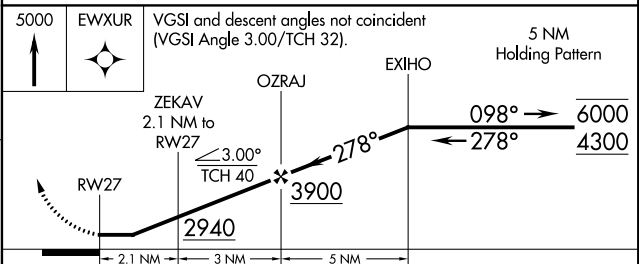
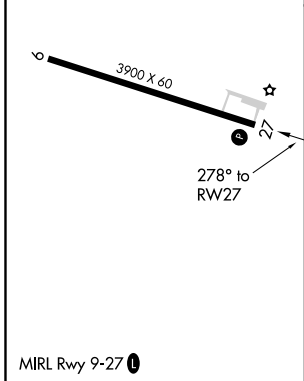
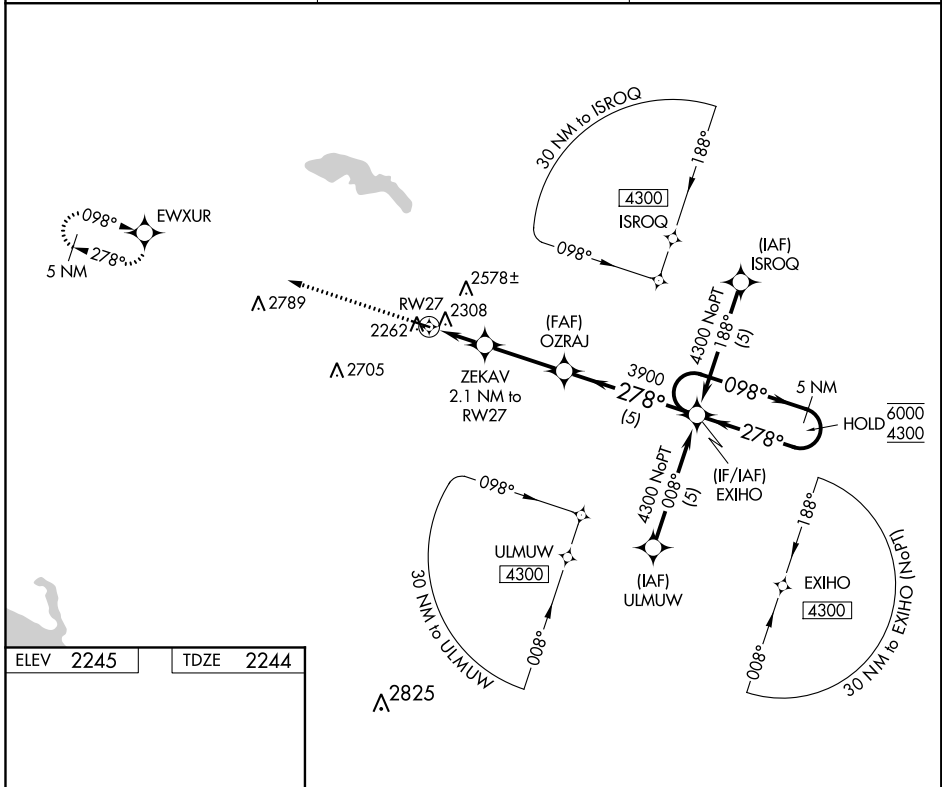
APP CRS 278°	Rwy Idg 3900
	TDZE 2244
	Apt Elev 2245

RNAV (GPS) RWY 27

STANLEY MUNI (Ø8D)

RNP APCH.	MISSED APPROACH: Climb to 5000 direct EWXUR and hold.
▼ Procedure NA at night. Rwy 27 helicopter visibility reduction below 1 SM NA.	

AWOS-3 121.1	MINNEAPOLIS CENTER 127.6 279.6	CTAF 122.9
------------------------	--	----------------------



CATEGORY	A	B	C	D
LNAV MDA	2620-1	376 (400-1)	NA	
CIRCLING	2720-1 475 (500-1)	2940-1 695 (700-1)	NA	

NC-1, 12 SEP 2019 to 10 OCT 2019

NC-1, 12 SEP 2019 to 10 OCT 2019