

VORTAC MSL 116.5 Chan 112	APP CRS 111°	Rwy Idg TDZE Apt Elev 4994 582 588
---	------------------------	--

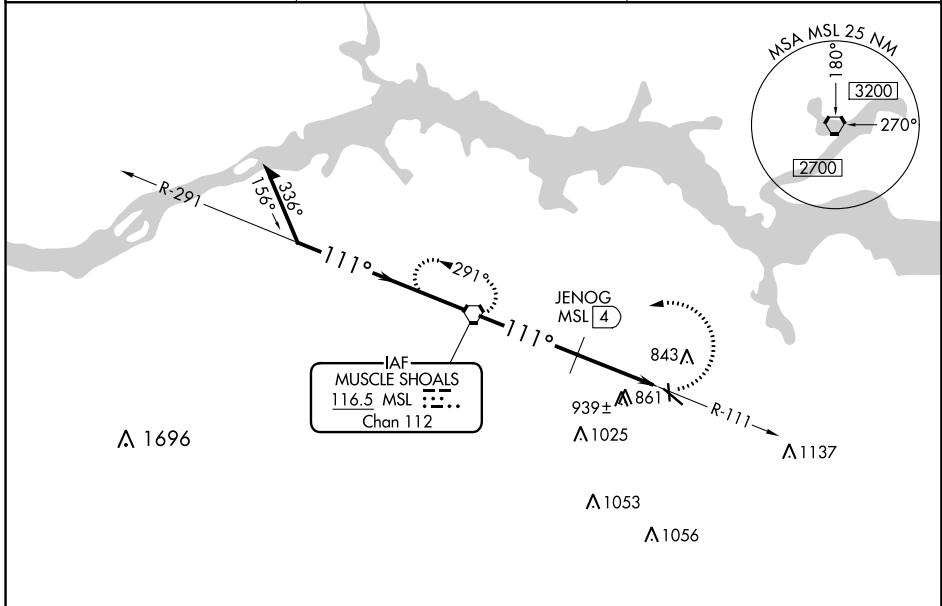
VOR RWY 13

COURTLAND (9A.4)

NA Use Muscle Shoals altimeter setting; when not received use Huntsville Int-Carl T. Jones Field altimeter setting and increase all MDA 40 feet; increase S-13 Cat B/C/D visibilities and Circling Cat B/C/D visibilities 1/4 mile and JENOG Fix Minimums: S-13 Cats C/D visibilities 1/4 mile and Circling Cat D visibility 1/4 mile. Night landing: Rwy 18 NA. Helicopter visibility reduction below 3/4 SM NA.

MISSED APPROACH: Climbing left turn to 2400 direct to MSL VORTAC and hold.

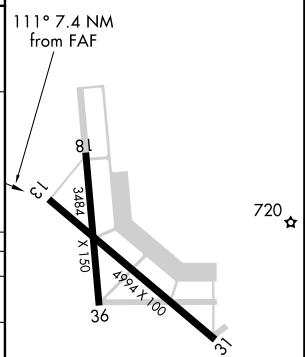
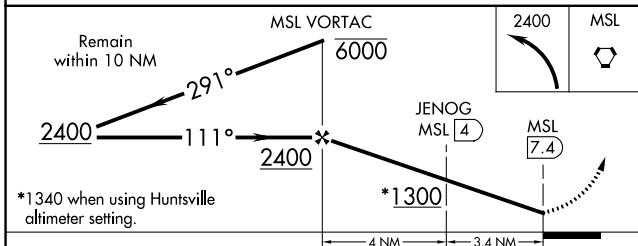
AWOS-3P 118.525	HUNTSVILLE APP CON ★ 118.05 239.0	UNICOM 122.7 (CTAF)
---------------------------	---	-------------------------------



SE-4, 12 SEP 2019 to 10 OCT 2019

SE-4, 12 SEP 2019 to 10 OCT 2019

ELEV 588	TDZE 582
----------	----------



CATEGORY	A	B	C	D
S-13	1300-1	718 (800-1)	1300-2 718 (800-2)	1300-2 1/4 718 (800-2 1/4)
CIRCLING	1300-1	712 (800-1)	1300-2 712 (800-2)	1300-2 1/4 712 (800-2 1/4)
JENOG FIX MINIMUMS				
S-13	1240-1	658 (700-1)	1240-1 3/4 658 (700-1 3/4)	1240-2 658 (700-2)
CIRCLING	1240-1 652 (700-1)	1280-1 692 (700-1)	1280-2 692 (700-2)	1300-2 1/4 712 (800-2 1/4)

HIRL Rwy 13-31	REIL Rws 13 and 31
FAF to MAP 7.4 NM	
Knots	60 90 120 150 180
Min:Sec	7:24 4:56 3:42 2:58 2:28