

WAAS CH 97724 W18A	APP CRS 185°	Rwy Idg TDZE Apt Elev	3499 247 247
--	------------------------	-----------------------------	---

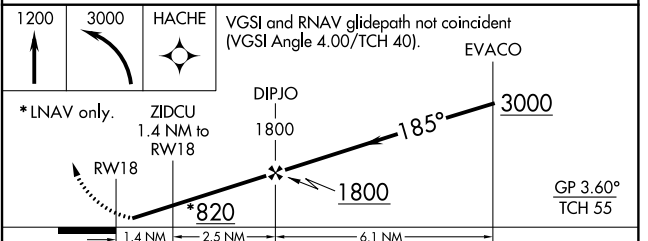
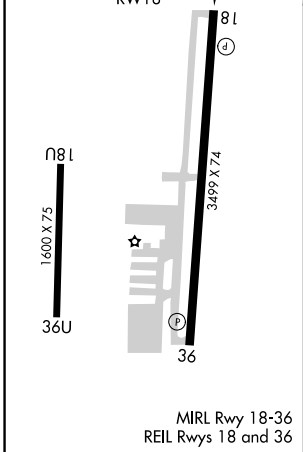
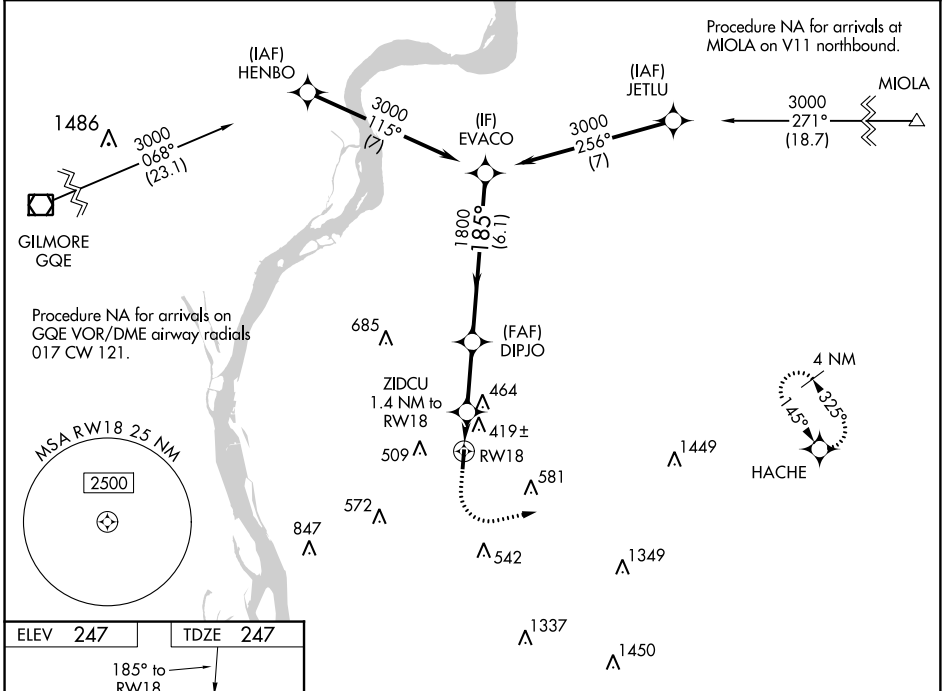
RNAV (GPS) RWY 18

CHARLES W BAKER (2M8)

NA Baro-VNAV NA. DME/DME RNP-0.3 NA. When local altimeter setting not received, use Millington Rgnl Jetport altimeter setting and increase all DA 24 feet; increase all MDA 40 feet and LNAV Cat C visibility 1/8 mile. Rwy 18 helicopter visibility reduction below 3/4 SM NA.

MISSED APPROACH: Climb to 1200 then climbing left turn to 3000 direct HACHE and hold.

AWOS-A 122.8	MEMPHIS APP CON 125.8 338.3	UNICOM 122.8 (CTAF)
------------------------	---------------------------------------	-------------------------------



CATEGORY	A	B	C	D
LPV DA	601-1	354 (400-1)		NA
LNAV/ VNAV DA	733-1 3/8	486 (500-1 3/8)		NA
LNAV MDA	680-1	433 (500-1)	680-1 1/4 433 (500-1 1/4)	NA
CIRCLING	740-1 493 (500-1)	780-1 533 (600-1)	860-1 3/4 613 (700-1 3/4)	NA

SE-1, 12 SEP 2019 to 10 OCT 2019

SE-1, 12 SEP 2019 to 10 OCT 2019