

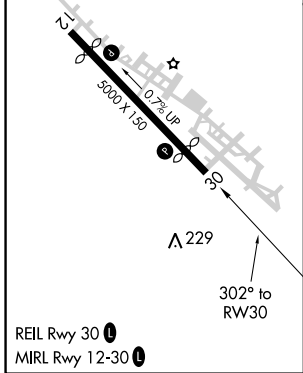
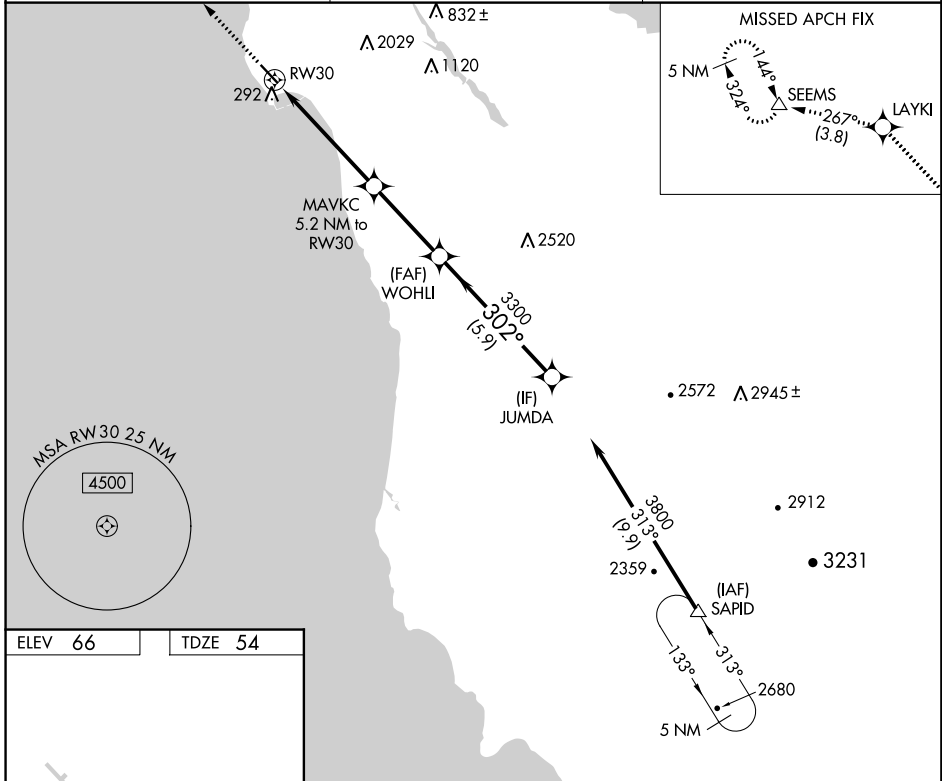
WAAS CH 50302 W30A	APP CRS 302°	Rwy Idg TDZE Apt Elev	4238 54 66
--	------------------------	-----------------------------	---------------------------------------

RNAV (GPS) RWY 30

HALF MOON BAY (HAF)

RNP APCH. ▽	MISSED APPROACH: Climb to 4000 direct LAYKI and on track 267° to SEEMS and hold, continue climb-in-hold to 4000.
----------------	--

AWOS-3 127.275	NORCAL APP CON 135.1 307.2	UNICOM 122.8 (CTAF) ①
--------------------------	--------------------------------------	---------------------------------



4000	LAYKI	tr 267°	SEEMS	VGSi and RNAV glidepath not coincident (VGSi Angle 3.00°/TCH 24).	
*LNAV only		MAVKC 5.2 NM to RW30		JUMDA	
RW30		3300		WOHLI	3800
1.8 NM		3.4 NM		302°	
2020*		3300		GP 3.50°	
1.8 NM		3.4 NM		5.9 NM	
TCH 40					
CATEGORY	A	B	C	D	
LPV DA	381-1 327 (400-1)				
LNAV MDA	620-1 566 (600-1)		620-1½ 566 (600-1½)		

SW-2, 12 SEP 2019 to 10 OCT 2019

SW-2, 12 SEP 2019 to 10 OCT 2019