

NDB SN 312	APP CRS 246°	Rwy ldg 8700
		TDZE 210
		Apt Elev 215

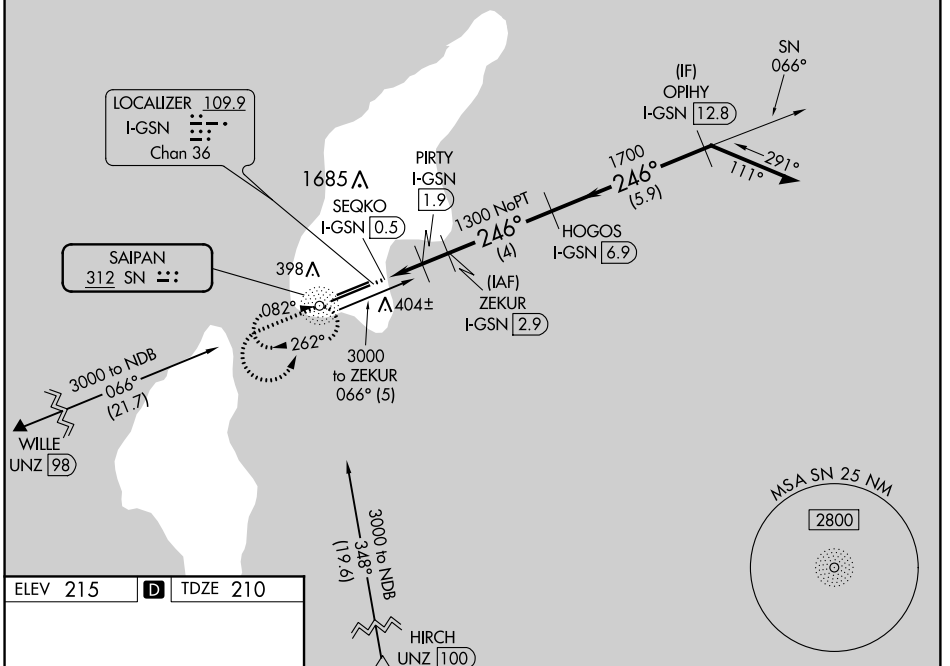
NDB RWY 25

FRANCISCO C ADA/SAIPAN INTL (GSN)(PGSN)

<p>▼ Circling NA north of Rwy 6-24. Rwy 25 helicopter visibility reduction below ¼ SM NA. DME required.</p>	<p>MISSED APPROACH: Climb to 2000 then climbing left turn to 2800 direct SN NDB and hold.</p>
--	---

<p>ATIS 127.2</p>	<p>GUAM APP CON 118.4 290.5</p>	<p>SAIPAN TOWER 125.7 256.9</p>	<p>GND CON 121.8</p>
------------------------------	--	--	---------------------------------

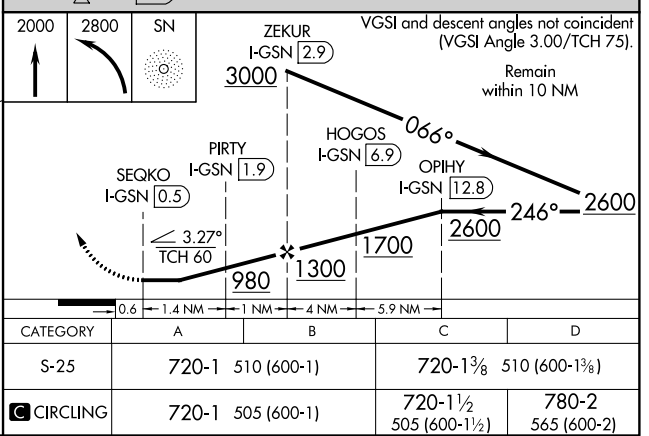
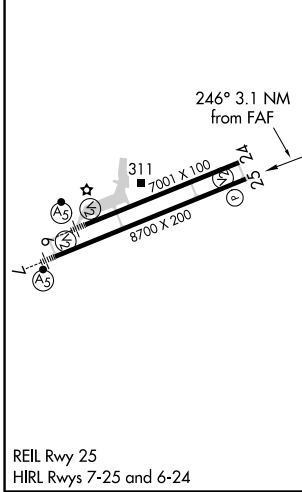
DME REQUIRED



PAC, 15 AUG 2019 to 10 OCT 2019

PAC, 15 AUG 2019 to 10 OCT 2019

ELEV 215	D	TDZE 210
----------	----------	----------



CATEGORY	A	B	C	D
S-25	720-1	510 (600-1)	720-1⅓	510 (600-1⅓)
C CIRCLING	720-1	505 (600-1)	720-1½	780-2 565 (600-2)