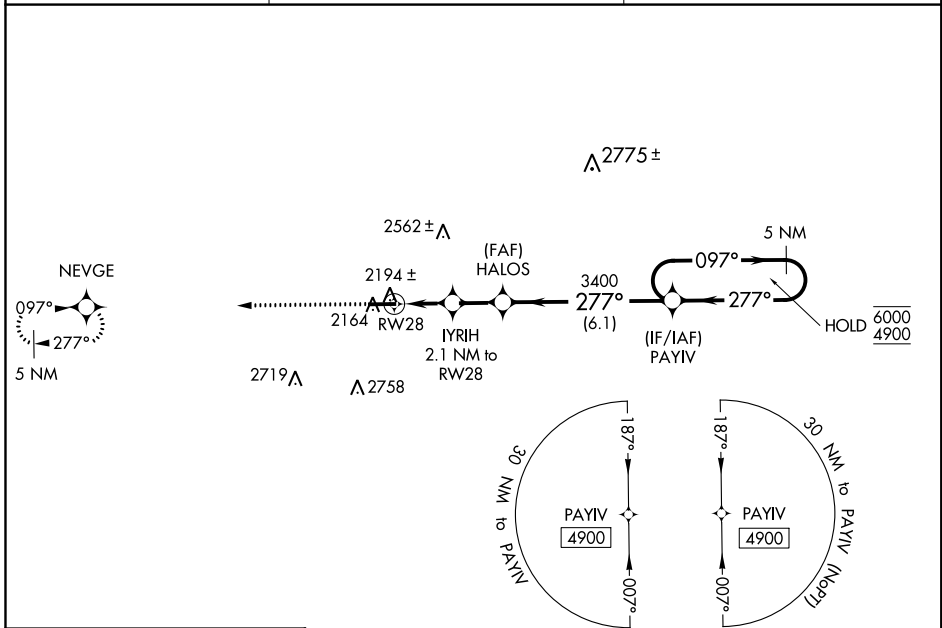


WAAS CH <b>49102</b> <b>W28A</b>	APP CRS <b>277°</b>	Rwy Idg TDZE Apt Elev	<b>5101</b> <b>2111</b> <b>2124</b>
--	------------------------	-----------------------------	---

# RNAV (GPS) RWY 28

WELLSVILLE MUNI AIRPORT, TARANTINE FIELD (E.L.Z)

RNP APCH.		MALS	MISSED APPROACH: Climb to 4900 direct NEVGE and hold, continue climb-in-hold to 4900.
▼ Inop table does not apply to LPV all Cats. For uncompensated Baro-VNAV systems, procedure NA below -22°C or above 54°C. ▲			
ASOS <b>119.275</b>	CLEVELAND CENTER <b>124.325 353.85</b>	UNICOM <b>123.0</b> (CTAF)	



NE-2, 12 SEP 2019 to 10 OCT 2019

NE-2, 12 SEP 2019 to 10 OCT 2019

ELEV 2124	<b>D</b>	TDZE 2111
-----------	----------	-----------

REIL Rwy 10

HIRL Rwy 10-28

4900	NEVGE				5 NM Holding Pattern
*LNAV only					
		YIRH 2.1 NM to RW28	HALOS 3400		PAYIV
		*1 NM to RW28	*2820	3400	097° heading, 6000/4900
		1 NM	1.1 NM	1.8 NM	6.1 NM
GP 3.02° TCH 52					
CATEGORY	A		B	C	D
LPV DA			2311- <sup>3</sup> / <sub>4</sub>	200 (200- <sup>3</sup> / <sub>4</sub> )	
LNAV/VNAV DA			2376- <sup>3</sup> / <sub>4</sub>	265 (300- <sup>3</sup> / <sub>4</sub> )	
LNAV MDA			2460- <sup>3</sup> / <sub>4</sub>	349 (400- <sup>3</sup> / <sub>4</sub> )	
<b>C</b> CIRCLING	2640-1 516 (600-1)	2660-1 536 (600-1)	2880-2 <sup>1</sup> / <sub>4</sub> 756 (800-2 <sup>1</sup> / <sub>4</sub> )	3060-3 936 (1000-3)	