

WAAS CH <b>53506</b> <b>W32A</b>	APP CRS <b>327°</b>	Rwy Idg TDZE Apt Elev	<b>5024</b> <b>393</b> <b>397</b>
--	------------------------	-----------------------------	---

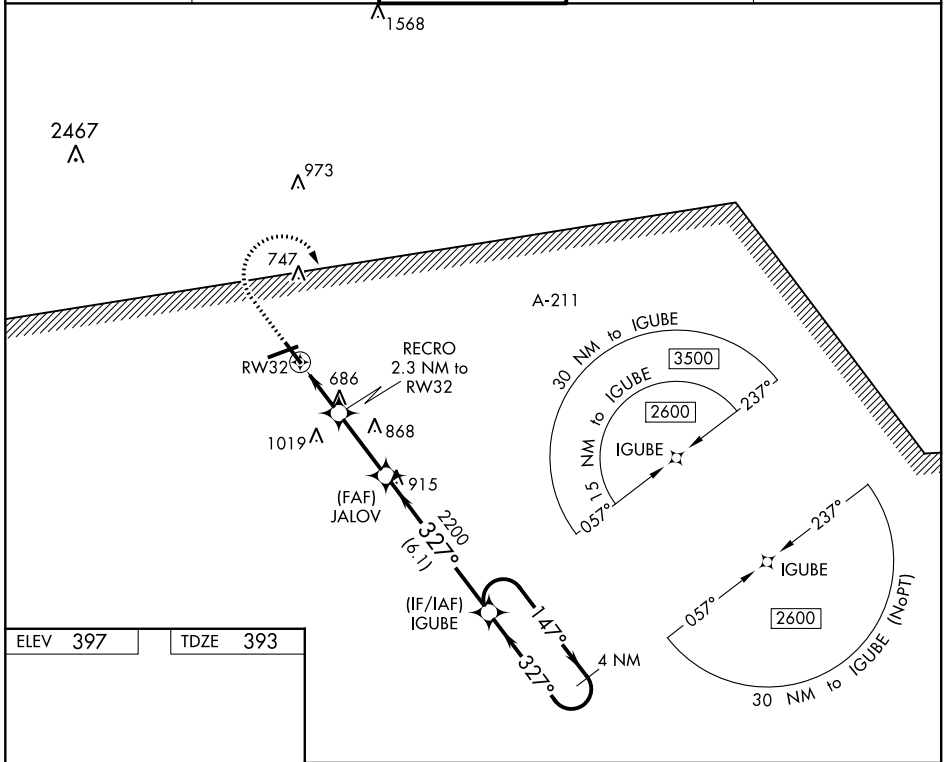
# RNAV (GPS) RWY 32

TROY MUNI AT N KENNETH CAMPBELL FIELD (TOI)

**ASR/PAR** DME/DME RNP-0.3 NA. When local altimeter setting not received, use Montgomery Rgnl (Dannelly Field) altimeter setting and increase all MDA 100 feet; increase LP and LNAV Cat C/D and Circling Cat C visibility ¼ mile. Helicopter visibility reduction below 1 SM NA. Rwy 32 Straight-in and Circling and Circling Rwy 14 NA at night.

**MISSED APPROACH:** Climb to 1200 then climbing right turn to 2600 direct IGUBE and hold.

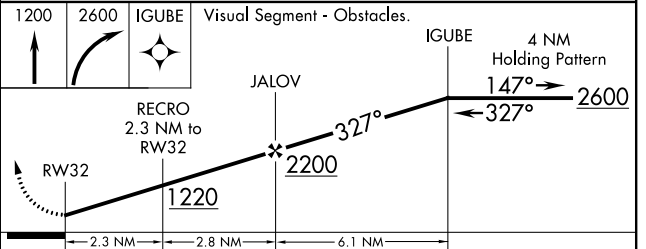
ATIS <b>120.925</b>	CAIRNS APP CON* <b>121.1 319.25</b>	TROY TOWER* <b>124.3 (CTAF) 306.9</b>	GND CON <b>121.9 263.125</b>	UNICOM <b>122.8</b>
------------------------	--	--	---------------------------------	------------------------



ELEV 397	TDZE 393
----------	----------

Obstacle diagram showing TWR 471, RW32, and various altitudes and distances. Key values include 6197 X 100, 5024 X 100, 327° to RW32, and 0.6% UP.

MIRL Rwy 7-25 and 14-32



CATEGORY	A	B	C	D
LP MDA	940-1	547 (600-1)	940-1½	547 (600-1½)
LNAV MDA	960-1	567 (600-1)	960-1¾	567 (600-1¾)
<b>C</b> CIRCLING	1000-1	603 (700-1)	1300-2¾ 903 (1000-2¾)	1380-3 983 (1000-3)

SE-4, 12 SEP 2019 to 10 OCT 2019

SE-4, 12 SEP 2019 to 10 OCT 2019