

RNAV (GPS) RWY 32

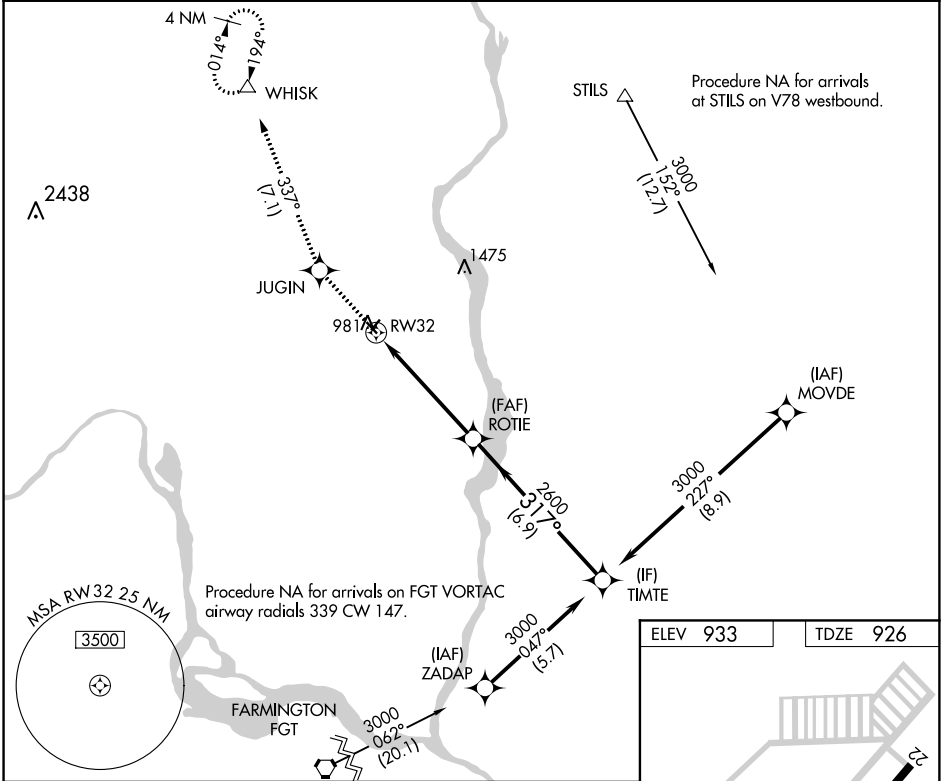
LAKE ELMO (21D)

APP CRS 317°	Rwy Idg 2849
	TDZE 926
	Apt Elev 933

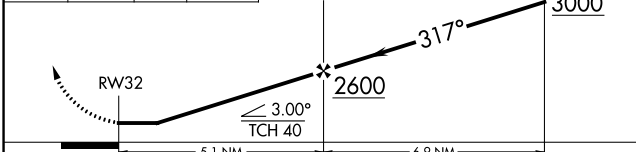
⚠ DME/DME RNP-0.3 NA. Visibility reduction by helicopters NA. When local altimeter setting not received, use St Paul Downtown Holman Field altimeter setting and increase all MDA 60 feet, increase LNAV Cat C visibility $\frac{1}{8}$ mile and Circling Cat C visibility $\frac{1}{4}$ mile. Circling Rwy 14/22 NA at night. When VGSI inoperative, Straight-In/Circling Rwy 32 procedure NA at night.

MISSED APPROACH: Climb to 3400 direct JUGIN and on track 337° to WHISK and hold.

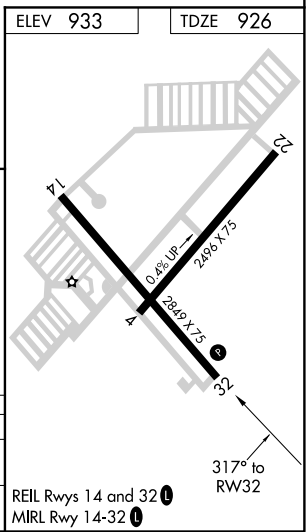
AWOS-3 120.075	MINNEAPOLIS APP CON 121.2 335.65	CINC DEL 118.625	UNICOM 122.8 (CTAF) 0
--------------------------	--	----------------------------	---------------------------------



3400	JUGIN	WHISK	VGSI and descent angles not coincident (VGSI Angle 3.00/TCH 26).	TIMTE
↑	✧	tr 337°		



CATEGORY	A	B	C	D
LNAV MDA	1500-1	574 (600-1)	1500-1 $\frac{1}{8}$ 574 (600-1 $\frac{1}{8}$)	NA
CIRCLING	1500-1 567 (600-1)	1560-1 627 (700-1)	1600-1 $\frac{3}{4}$ 667 (700-1 $\frac{3}{4}$)	NA



NC-1, 12 SEP 2019 to 10 OCT 2019

NC-1, 12 SEP 2019 to 10 OCT 2019