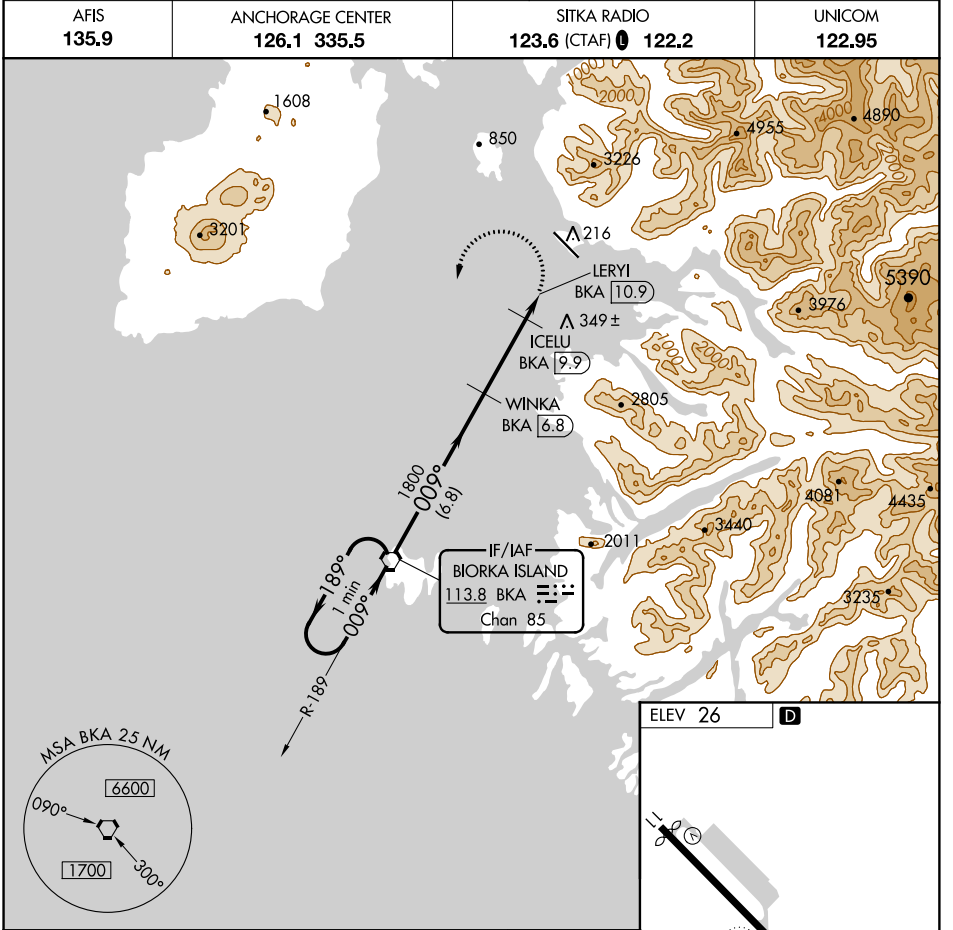


VORTAC BKA <b>113.8</b> Chan <b>85</b>	APP CRS <b>009°</b>	Rwy Idg TDZE Apt Elev	<b>N/A</b> <b>N/A</b> <b>26</b>
--	------------------------	-----------------------------	---------------------------------------

# VOR/DME-A

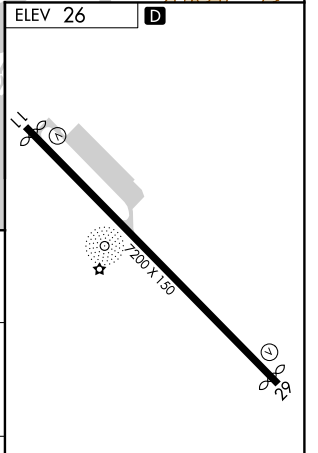
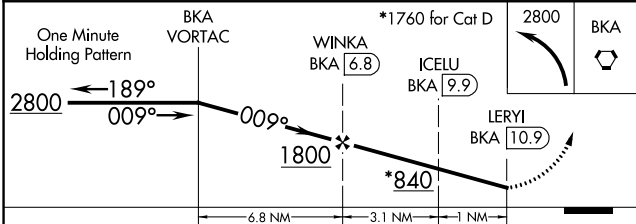
SITKA ROCKY GUTIERREZ (SIT)(PASI)

<p><b>⚠</b> When local altimeter setting not received, procedure NA. Circling NA north of Rwy 11-29.</p>	<p>MISSED APPROACH: Climbing left turn to 2800 direct BKA VORTAC and hold.</p>		
	AFIS <b>135.9</b>	ANCHORAGE CENTER <b>126.1 335.5</b>	SITKA RADIO <b>123.6</b> (CTAF) <b>122.2</b>



AK, 15 AUG 2019 to 10 OCT 2019

AK, 15 AUG 2019 to 10 OCT 2019



CATEGORY	A	B	C	D
<b>C</b> CIRCLING	660-2 ¼	634 (700-2 ¼)	760-2 ¼ 734 (800-2 ¼)	1760-3 1734 (1800-3)

REIL Rwys 11 and 29 **Ⓛ**  
HIRL Rwy 11-29 **Ⓛ**