

WAAS CH <b>81904</b> <b>W02A</b>	APP CRS <b>016°</b>	Rwy Idg TDZE <b>724</b> Apt Elev <b>724</b>	<b>4599</b> <b>724</b> <b>724</b>
--	------------------------	---	---

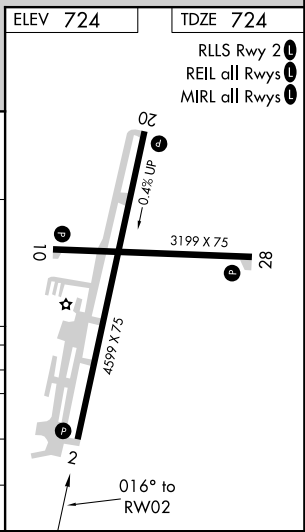
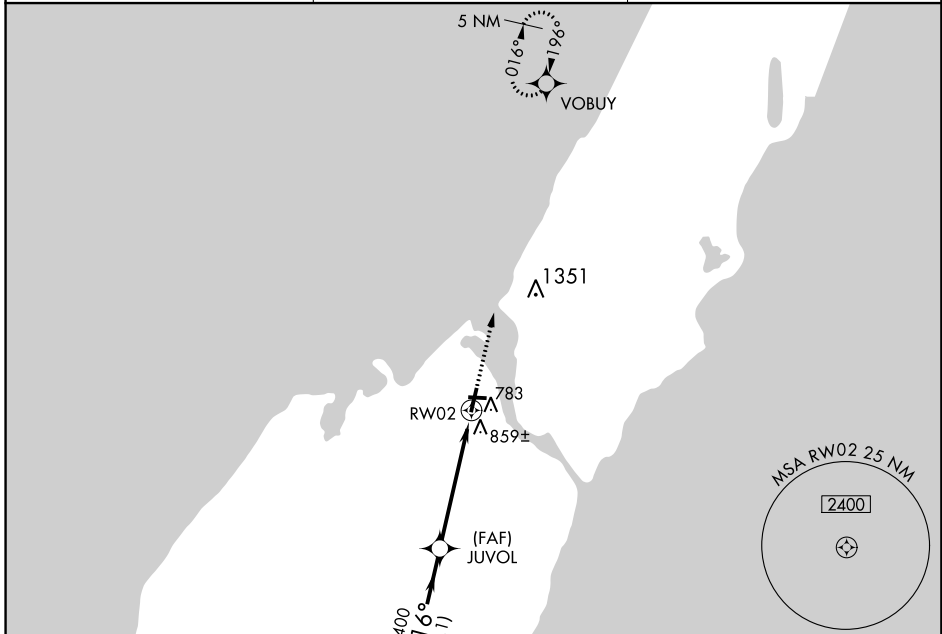
# RNAV (GPS) RWY 2

DOOR COUNTY CHERRYLAND (SUE)

Baro-VNAV and VDP NA when using Menominee altimeter setting. When local altimeter setting not received, use Menominee altimeter setting and increase all DA/MDA 60 feet, and LPV, LNAV/VNAV and LNAV Cat C/D visibilities ¼ mile. For uncompensated Baro-VNAV systems, LNAV/VNAV NA below -16°C (4°F) or above 47°C (116°F). Helicopter visibility reduction below ¼ SM NA. DME/DME RNP-0.3 NA.

MISSED APPROACH: Climb to 2600 direct VOBUY and hold.

AWOS-3PT <b>128.325</b>	GREEN BAY APP CON * <b>119.25 338.2</b>	UNICOM <b>122.7(CTAF) 0</b>
----------------------------	--	--------------------------------



Procedure Turn NA NENSE VGS1 and RNAV glidepath not coincident (VGS1 Angle 3.00/TCH 34). 2600 VOBUY

GP 3.00° TCH 40

3500 016° 2400 JUVOL \*1.1 NM to RWY 2 \*LNAV only. RWY 2

10.1 NM 3.9 NM 1.1 NM

CATEGORY	A	B	C	D
LPV DA	1013-1	289 (300-1)		
LNAV/VNAV DA	1164-1½	440 (500-1½)		
LNAV MDA	1120-1	396 (400-1)	1120-1⅛	396 (400-1⅛)
CIRCLING	1160-1 436 (500-1)	1180-1 456 (500-1)	1180-1½ 456 (500-1½)	1280-2 556 (600-2)

EC-3, 12 SEP 2019 to 10 OCT 2019

EC-3, 12 SEP 2019 to 10 OCT 2019