

WAAS CH 72731 W19A	APP CRS 194°	Rwy Idg TDZE Apt Elev	3700 733 733
--	------------------------	-----------------------------	---

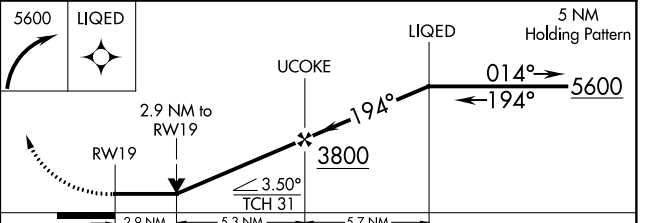
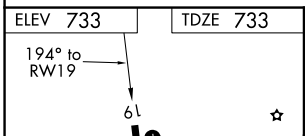
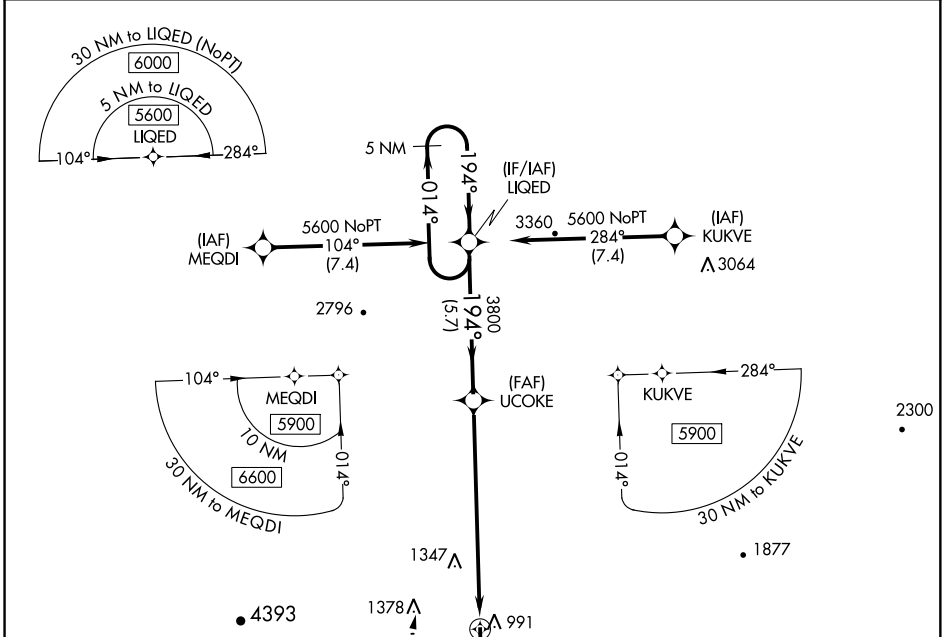
RNAV (GPS) Y RWY 19

MORRISVILLE-STOWE STATE (MVL)

⚠ Circling NA for Cat C E of Rwy 1-19. Rwy 19 helicopter visibility reduction below 3/4 SM NA. DME/DME RNP-0.3 NA. VDP NA when using Burlington altimeter setting. When local altimeter setting not received, use Burlington altimeter setting and increase all MDAs 120 feet.

⚠ MISSED APPROACH: (Do not exceed 165K until LIQED) Climbing right turn to 5600 direct LIQED and hold, continue climb-in-hold to 5600.

ASOS 135.625	BOSTON CENTER 135.7 282.2	UNICOM 122.8 (CTAF) 0
------------------------	-------------------------------------	---------------------------------



CATEGORY	A	B	C	D
LP MDA	1860-1/4 1127 (1200-1/4)	1860-1/2 1127 (1200-1/2)	1860-3 1127 (1200-3)	NA
LNAV MDA	2160-1/4 1427 (1500-1/4)	2160-1/2 1427 (1500-1/2)	2160-3 1427 (1500-3)	NA
C CIRCLING	2160-1/4 1427 (1500-1/4)	2160-1/2 1427 (1500-1/2)	2160-3 1427 (1500-3)	NA

NE-1, 12 SEP 2019 to 10 OCT 2019

NE-1, 12 SEP 2019 to 10 OCT 2019