

APP CRS	Rwy Idg	<b>3499</b>
<b>102°</b>	TDZE	<b>128</b>
	Apt Elev	<b>128</b>

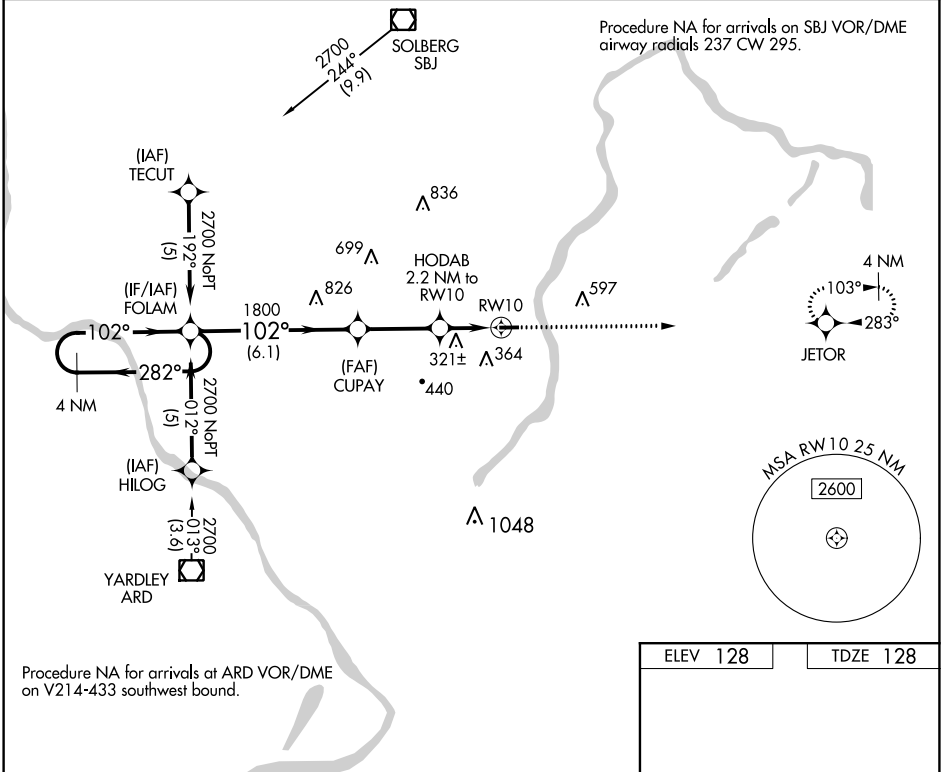
# RNAV (GPS) RWY 10

PRINCETON (39N)

**⚠** Use Trenton Mercer altimeter setting; when not received, use Somerset altimeter setting.  
**⚠** DME/DME RNP-0.3 NA. Procedure NA at night. Rwy 10, 28 helicopter visibility reduction below 1 SM NA.

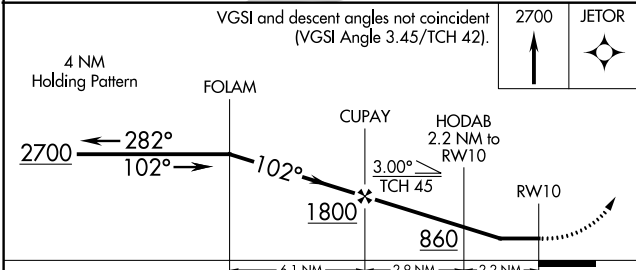
**MISSED APPROACH:**  
 Climb to 2700 direct JETOR and hold.

TRENTON MERCER ASOS <b>126.775</b>	NEW YORK APP CON <b>132.8 379.9</b>	UNICOM <b>122.725 (CTAF)</b>	<b>123.05</b> <b>0</b>
---------------------------------------	--	---------------------------------	------------------------



NE-2, 12 SEP 2019 to 10 OCT 2019

NE-2, 12 SEP 2019 to 10 OCT 2019



ELEV 128	TDZE 128
----------	----------

MIRL Rwy 10-28 **0**  
 REIL Rwy 10 **0**

CATEGORY	A	B	C	D
LNAV MDA	640-1	512 (600-1)	640-1 <sup>3</sup> / <sub>8</sub> 512 (600-1 <sup>3</sup> / <sub>8</sub> )	NA
CIRCLING	780-1 652 (700-1)	800-1 672 (700-1)	860-2 732 (800-2)	NA