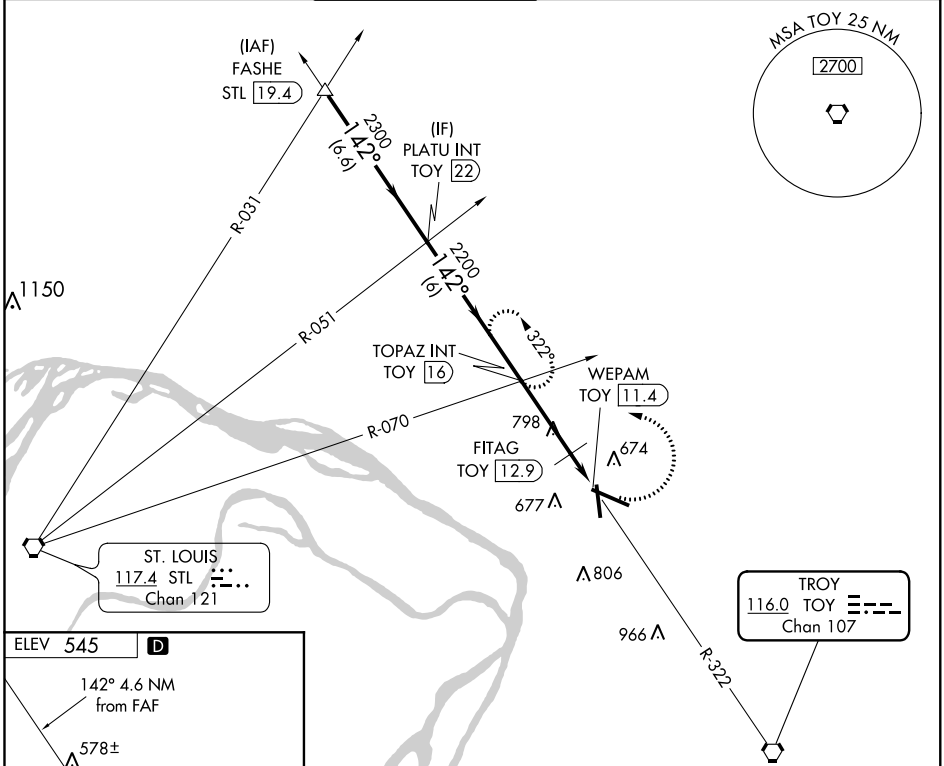


VORTAC TOY 116.0 Chan 107	APP CRS 142°	Rwy Idg TDZE Apt Elev 545	N/A N/A 545
---	------------------------	---	--

VOR-A
ST LOUIS RGNL (A.L.N)

<p>⚠ When local altimeter setting not received, use St Louis Lambert Intl altimeter setting and increase all MDA 60 feet. When VGS1 inop, Circling to Rwy 17/35 NA at night.</p>		<p>MISSED APPROACH: Climbing left turn to 2200 via TOY R-322 to TOPAZ INT/TOY 16 DME and hold.</p>			
ATIS 128.0	ST LOUIS APP CON 124.2 353.9	REGIONAL TOWER* 126.0 (CTAF) 0 239.0	GND CON 120.2	CLNC DEL 120.2 (when tower closed)	UNICOM 122.95



EC-3, 12 SEP 2019 to 10 OCT 2019

EC-3, 12 SEP 2019 to 10 OCT 2019

ELEV 545 **D**

142° 4.6 NM from FAF

578±

8099 X 150

6500 X 100

615 612

35

REIL Rwy 11 **Ⓛ**

HIRL Rwy 11-29 **Ⓛ**

MIRL Rwy 17-35 **Ⓛ**

FAF to MAP 4.6 NM

Knots	60	90	120	150	180
Min:Sec	4:36	3:04	2:18	1:50	1:32

	FASHE STL 19.4 2700	*1160 when using St Louis Lambert Intl altimeter setting.	2200	TOPAZ INT
	142°	PLATU INT TOY 22	2300	TOY R-322
		TOPAZ INT TOY 16	2200	TOY 11.4
		FITAG TOY 12.9	*1100	WEPAM TOY 11.4
	6.6 NM	6 NM	3.2 NM	1.4 NM
CATEGORY	A	B	C	D
CIRCLING	1100-1	555 (600-1)	1100-1½ 555 (600-1½)	1100-2 555 (600-2)
FITAG FIX MINIMUMS				
CIRCLING	980-1 435 (500-1)	1000-1 455 (500-1)	1000-1½ 455 (500-1½)	1100-2 555 (600-2)