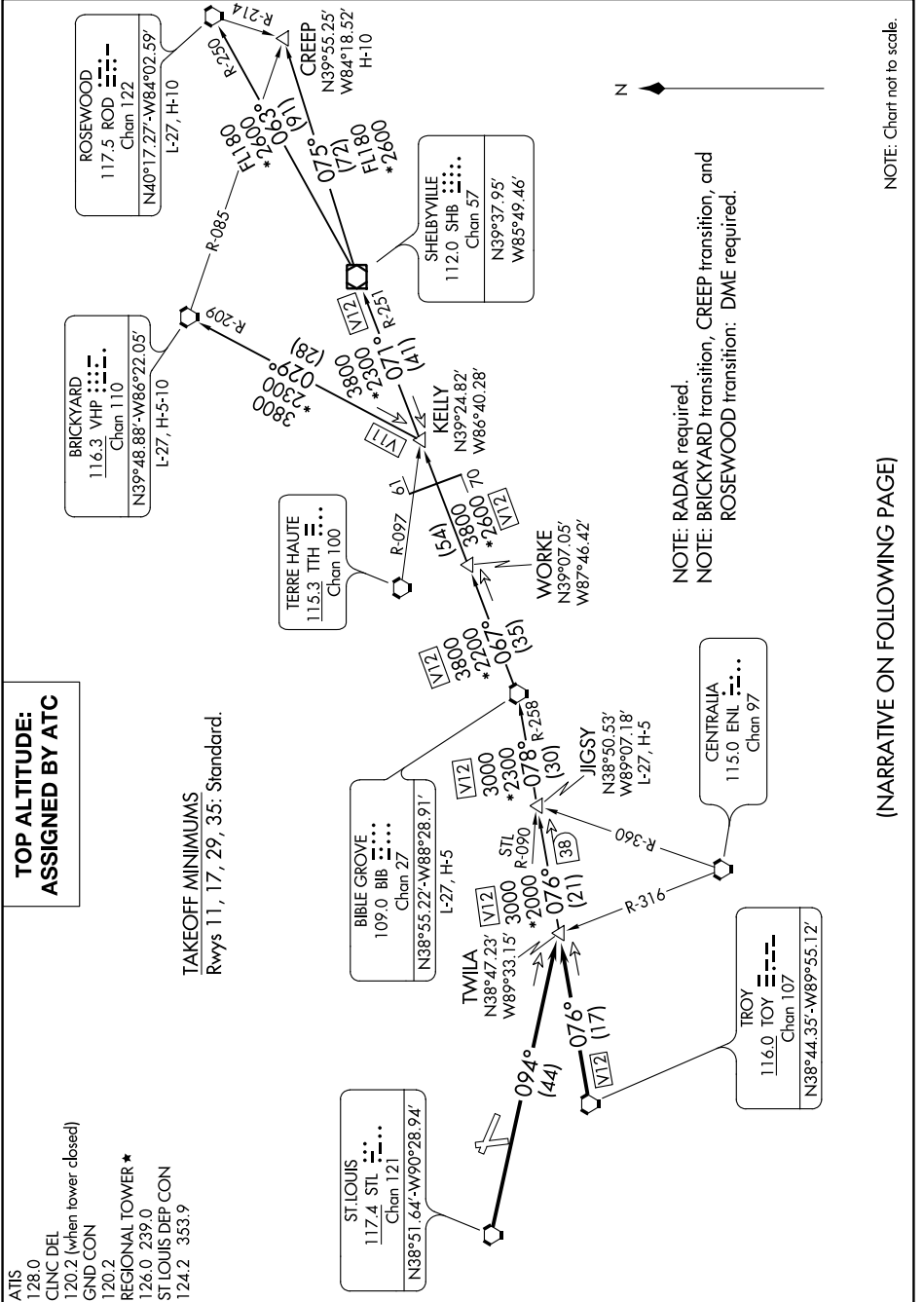


EC-3, 12 SEP 2019 to 10 OCT 2019

**TOP ALTITUDE:
ASSIGNED BY ATC**

ATIS
128.0
CLNC DEL
120.2 (when tower closed)
GND CON
120.2
REGIONAL TOWER ★
126.0 239.0
ST LOUIS DEP CON
124.2 353.9

TAKEOFF MINIMUMS
Rwys 11, 17, 29, 35: Standard.



NOTE: RADAR required.
NOTE: BRICKYARD transition, CREEP transition, and ROSEWOOD transition: DME required.

(NARRATIVE ON FOLLOWING PAGE)

NOTE: Chart not to scale.

EC-3, 12 SEP 2019 to 10 OCT 2019