

LOC/DME I-FYJ 109.55 Chan 32 (Y)	APP CRS 094°	Rwy Ldg TDZE Apt Elev	5000 14 20
-----------------------------------------------	------------------------	-----------------------------	---------------------------------------

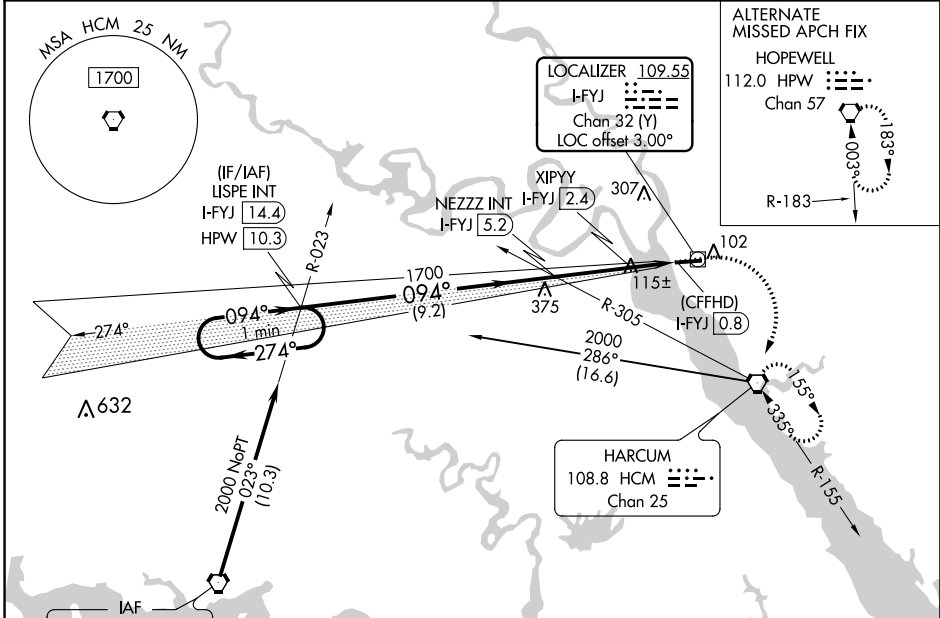
LOC RWY 10

MIDDLE PENINSULA RGNL (F'YJ)

NA When local altimeter setting not received, use Newport News altimeter setting and increase all MDA 80 feet and increase S-10 Cat B and Circling Cat B visibility ¼ SM. VDP NA when using Newport News altimeter setting.

MISSED APPROACH: Climb to 500 then climbing right turn to 2000 direct HCM VORTAC and hold, continue climb-in-hold to 2000.

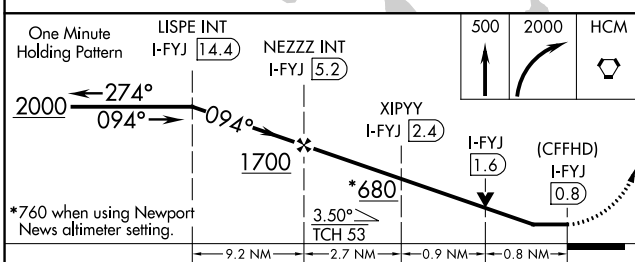
AWOS-3 132.825	POTOMAC APP CON 126.4 282.375	UNICOM 123.0 (CTAF)
--------------------------	-----------------------------------------	-------------------------------



NE-3, 12 SEP 2019 to 10 OCT 2019

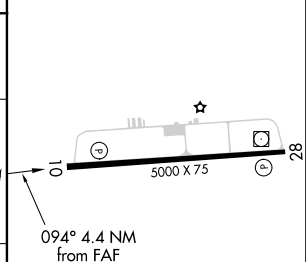
NE-3, 12 SEP 2019 to 10 OCT 2019

Procedure NA for arrivals on HPW VORTAC airway radials 323 CW 025.



One Minute Holding Pattern	LISPE INT I-FYJ 14.4	NEZZZ INT I-FYJ 5.2	500	2000	HCM
2000 ← 274°	→ 094°	→ 094°	↑	↷	◻
*760 when using Newport News altimeter setting.	→ 9.2 NM	→ 2.7 NM	→ 0.9 NM	→ 0.8 NM	
CATEGORY	A	B	C	D	
S-10	680-1	666 (700-1)		NA	
C CIRCLING	680-1	660 (700-1)		NA	
XIPYY FIX MINIMUMS					
S-10	380-1	366 (400-1)		NA	
C CIRCLING	480-1 460 (500-1)	620-1 600 (600-1)		NA	

ELEV 20	TDZE 14
---------	---------



MIRL Rwy 10-28	
REIL Rws 10 and 28	
FAF to MAP 4.4 NM	
Knots	60 90 120 150 180
Min:Sec	4:24 2:56 2:12 1:46 1:28