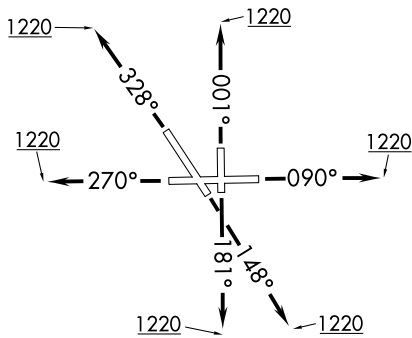


(ADELL5.ADELL) 18312

ADELL FIVE DEPARTURE (RNAV)

AL-5103 (FAA)

AURORA MUNI (ARR)
CHICAGO/AURORA, ILLINOIS



**TOP ALTITUDE:
3000**

ATIS 125.85
 GND CON 121.7
 AURORA TOWER ★ 120.6
 CHICAGO DEP CON 133.5 349.0

TAKEOFF MINIMUMS:

Rwys 9, 15, 18, 27, 33, 36: Standard.

NOTE: RADAR required.

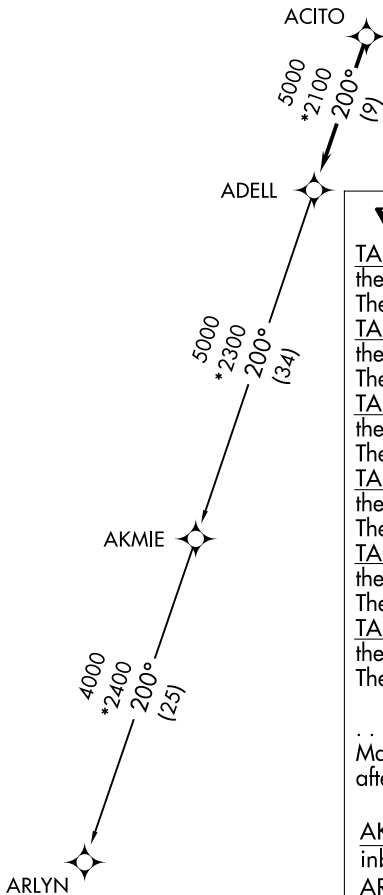
NOTE: DME/DME/IRU or GPS required.

NOTE: RNAV 1.

NOTE: Turbojet departures maintain 250K until advised by ATC.

EC-3, 12 SEP 2019 to 10 OCT 2019

EC-3, 12 SEP 2019 to 10 OCT 2019



NOTE: Chart not to scale.

DEPARTURE ROUTE DESCRIPTION

TAKEOFF RUNWAY 9: Climb heading 090° to 1220, then as assigned by ATC, for vectors to ACITO. Thence . . .

TAKEOFF RUNWAY 15: Climb heading 148° to 1220, then as assigned by ATC, for vectors to ACITO. Thence . . .

TAKEOFF RUNWAY 18: Climb heading 181° to 1220, then as assigned by ATC, for vectors to ACITO. Thence . . .

TAKEOFF RUNWAY 27: Climb heading 270° to 1220, then as assigned by ATC, for vectors to ACITO. Thence . . .

TAKEOFF RUNWAY 33: Climb heading 328° to 1220, then as assigned by ATC, for vectors to ACITO. Thence . . .

TAKEOFF RUNWAY 36: Climb heading 001° to 1220, then as assigned by ATC, for vectors to ACITO. Thence . . .

. . . on track 200° to ADELL, then on (transition). Maintain 3000. Expect filed altitude 10 minutes after departure.

AKMIE TRANSITION (ADELL5.AKMIE): (For aircraft inbound to BMI, SPI, or PIA, or as assigned by ATC.)

ARLYN TRANSITION (ADELL5.ARLYN):

ADELL FIVE DEPARTURE (RNAV)

(ADELL5.ADELL) 08NOV18

CHICAGO/AURORA, ILLINOIS
AURORA MUNI (ARR)