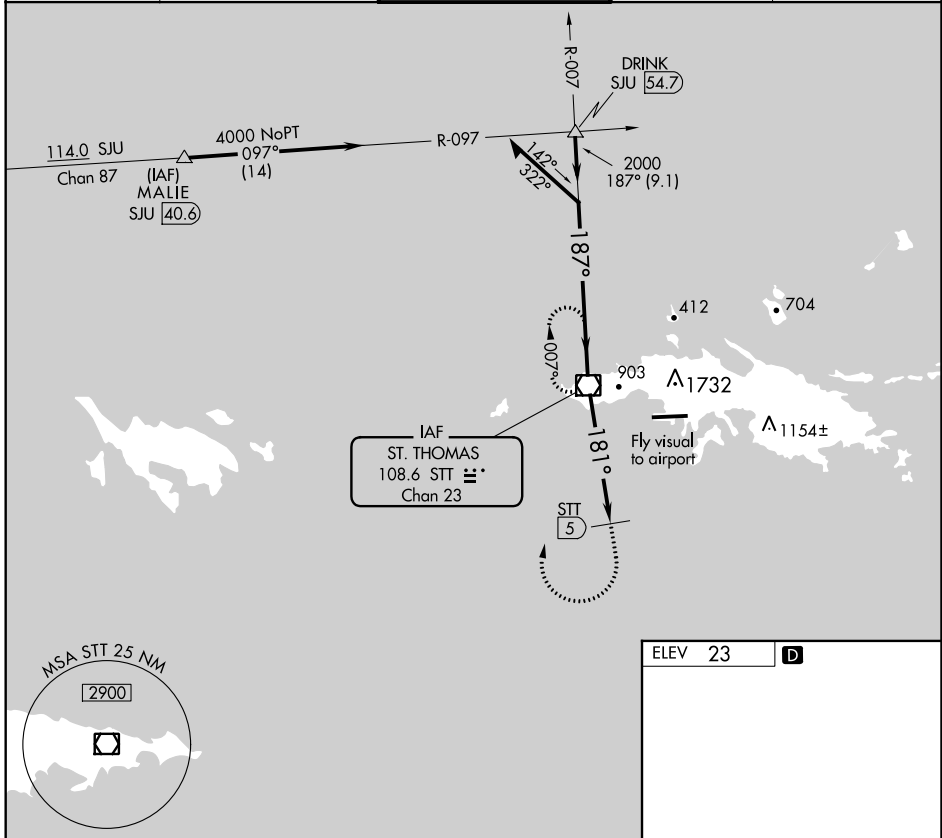


VOR/DME STT <b>108.6</b> Chan <b>23</b>	APP CRS <b>181°</b>	Rwy Idg TDZE Apt Elev	<b>N/A</b> <b>N/A</b> <b>23</b>
---	------------------------	-----------------------------	---------------------------------------

**VOR-A**  
CYRIL E KING (STT)(TIST)

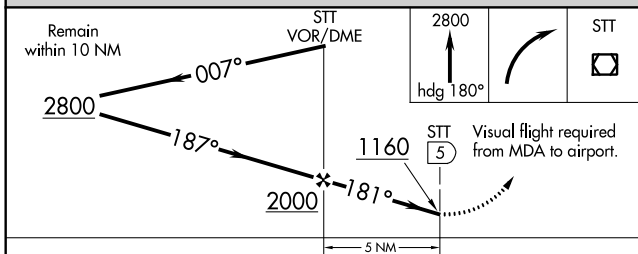
<p><b>CAUTION:</b> High terrain north of Rwy 10-28 extended. Circling north of Rwy 10-28 NA. Procedure NA when control tower not in operation. Procedure NA at night.</p>	<p><b>MISSED APPROACH:</b> If unable to proceed visually to airport upon descent to 1160, climb to 2800 via heading 180°, then right turn direct STT VOR/DME and hold.</p>
---	--

ATIS <b>124.0</b>	SAN JUAN CENTER <b>128.65 279.6</b>	<b>ST. THOMAS TOWER ★</b> <b>118.8 (CTAF) 0 257.6</b> <b>118.1 (NORTH OF ISLAND)</b>	GND CON <b>121.9</b>	UNICOM <b>122.95</b>
----------------------	--	--	-------------------------	-------------------------



SE-3, 12 SEP 2019 to 10 OCT 2019

SE-3, 12 SEP 2019 to 10 OCT 2019



ELEV 23	<b>D</b>
---------	----------

REIL Rwy 10  
MIRL Rwy 10-28 **0**