

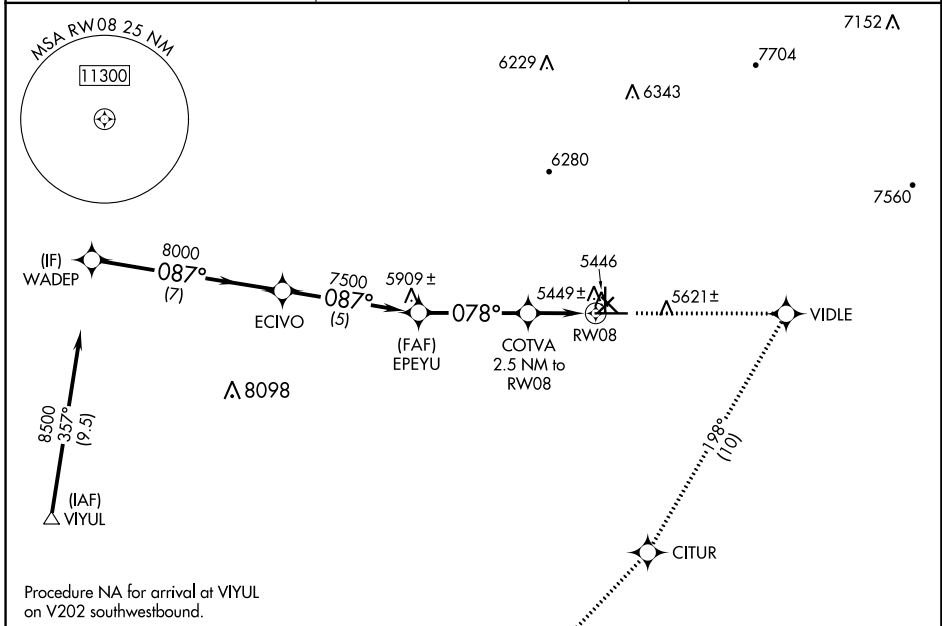
APP CRS	Rwy Idg	6802
078°	TDZE	5386
	Apt Elev	5446

RNAV (GPS) RWY 8

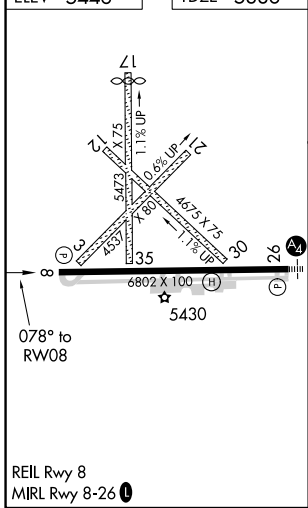
GRANT COUNTY (SVC)

RNP APCH.	MISSED APPROACH: Climb to 10000 direct VIDLE and right turn via 198° track to CITUR and via 212° track to KUNRE and hold.
▼ If local altimeter setting not received, procedure NA. Rwy 8 helicopter visibility reduction below 3/4 SM NA.	

AWOS-3 126.725	ALBUQUERQUE CENTER 134.45 327.15	UNICOM 122.8 (CTAF) 0
--------------------------	--	---------------------------------



ELEV 5446	TDZE 5386
-----------	-----------



VGSI and descent angles not coincident (VGSI Angle 3.00/TCH 44). WADEP ECIVO EPEYU COTVA 2.5 NM to RW08 Procedure Turn NA	10000	VIDLE	CITUR	KUNRE
	↑	✧	↷ 198° tr	✧
	8500	8000	7500	6200
	078°	078°	078°	212° tr
	7 NM	5 NM	3.9 NM	1.6
				0.9
CATEGORY	A	B	C	D
LNAV MDA	5700-1 314 (300-1)			

SW-1, 12 SEP 2019 to 10 OCT 2019

SW-1, 12 SEP 2019 to 10 OCT 2019