

LOC I-PWA 110.15	APP CRS 175°	Rwy Idg 6844
		TDZE 1291
		Apt Elev 1300

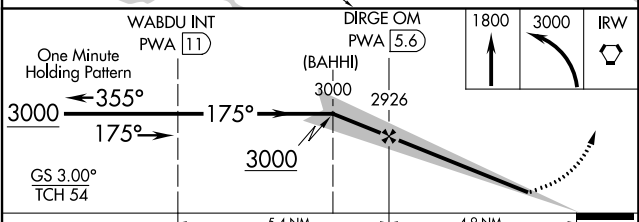
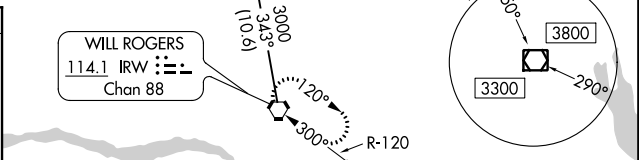
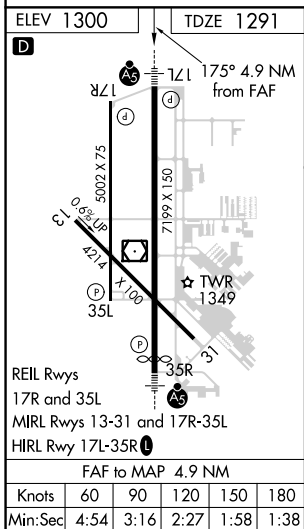
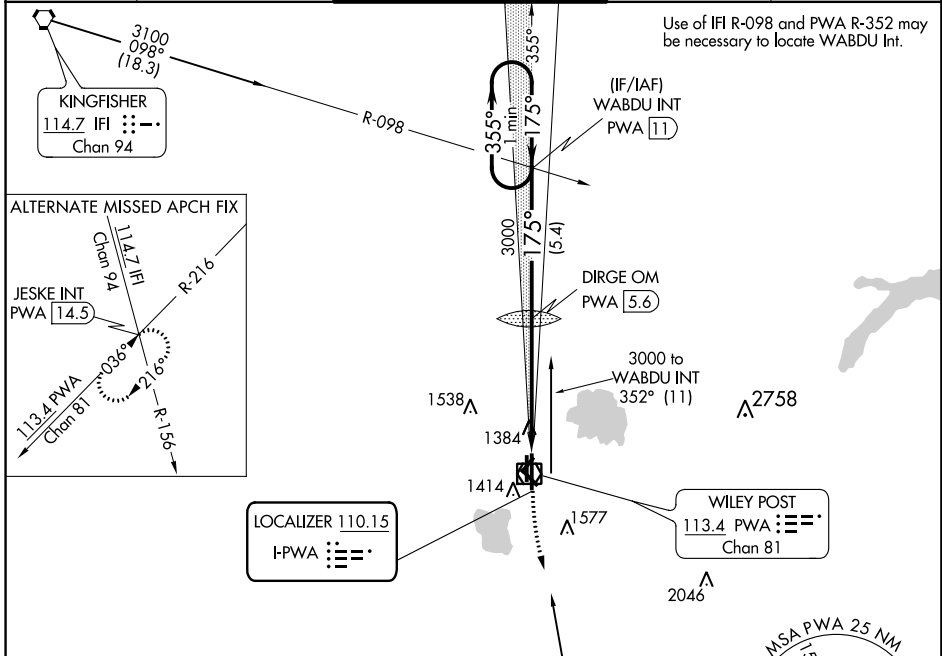
ILS or LOC RWY 17L

WILEY POST (PWA)

⚠ When local altimeter setting not received, use Will Rogers World altimeter setting and increase all DA 21 feet and all MDA 40 feet and increase S-LOC 17L Cat C visibility ¼ mile.

MALSR MISSED APPROACH: Climb to 1800 then climbing left turn to 3000 direct IRW VORTAC and hold.

ATIS 128.725	OKE CITY APP CON 124.6 266.8	WILEY POST TOWER ★ 126.9 (CTAF) 306.9	GND CON 121.7	UNICOM 122.95
------------------------	----------------------------------------	-------------------------------------------------	-------------------------	-------------------------



CATEGORY	A	B	C	D
S-ILS 17L	1491-1/2		200 (200-1/2)	
S-LOC 17L	1660-1/2		369 (400-1/2)	
CIRCLING	1780-1		1880-1/2	
	480 (500-1)		580 (600-1/2)	