

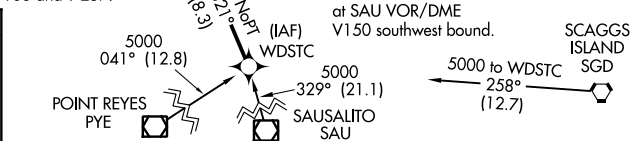
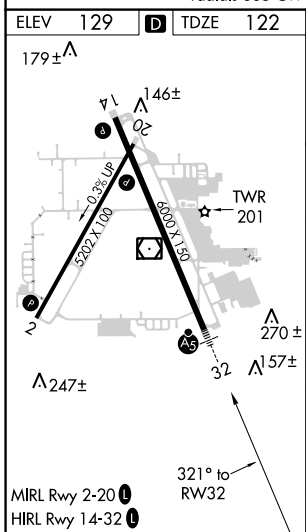
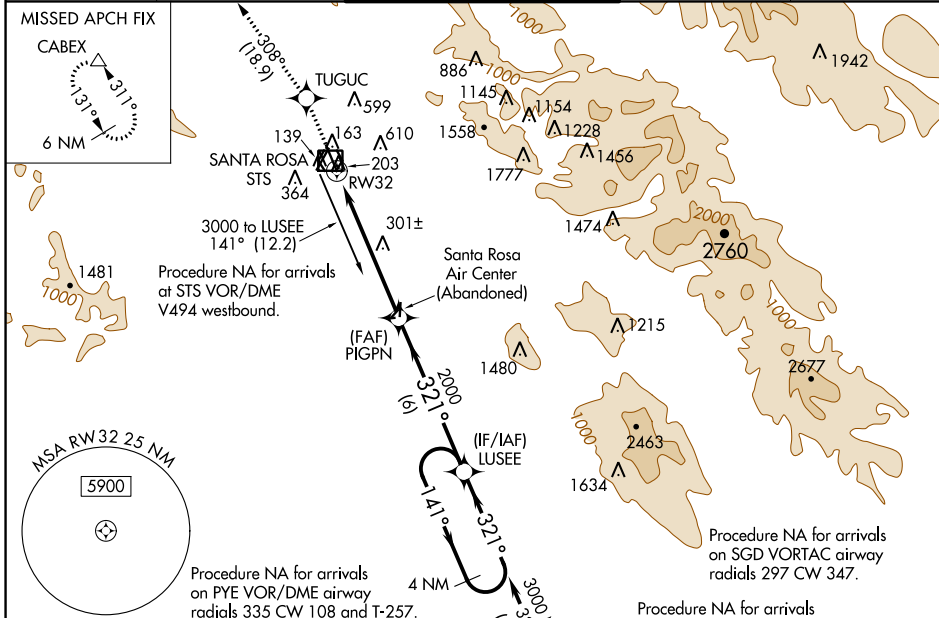
WAAS CH <b>72611</b> <b>W32A</b>	APP CRS <b>321°</b>	Rwy Idg <b>6000</b> TDZE <b>122</b> Apt Elev <b>129</b>
--	------------------------	---

# RNAV (GPS) RWY 32

CHARLES M SCHULZ-SONOMA COUNTY (STS)

RNP APCH. ▼ For uncompensated Baro-VNAV systems, LNAV/VNAV NA below -4°C or above 54°C. ▲ # RVR 1800 authorized with use of FD or AP or HUD to DA.	MALSR 	MISSED APPROACH: Climb to 6000 direct TUGUC and on track 308° to CABEX and hold, continue climb-in-hold to 6000.
--	-----------	--

ATIS <b>120.55</b>	OAKLAND CENTER <b>127.8 353.5</b>	SANTA ROSA TOWER* <b>118.5 (CTAF) 0 363.0</b>	GND CON <b>121.9</b>	UNICOM <b>122.95</b>
-----------------------	--------------------------------------	--	-------------------------	-------------------------



6000 ↑	TUGUC	tr 308°	CABEX	LUSEE	4 NM Holding Pattern
* LNAV only.					
RW32		* 1.2 NM to RW32	PIGPN 2000	GP 3.00° TCH 53	
1.2		4.5 NM		6 NM	
CATEGORY	A	B	C	D	
LPV DA #		322/24	200 (200-½)		
LNAV/VNAV DA		570/50	448 (500-1)		
LNAV MDA	560/24	438 (500-½)	560/40	438 (500-¾)	
CIRCLING	600-1	680-1	1080-3	1420-3	
	471 (500-1)	551 (600-1)	951 (1000-3)	1291 (1300-3)	

SW-2, 12 SEP 2019 to 10 OCT 2019

SW-2, 12 SEP 2019 to 10 OCT 2019