

TACAN Y RWY 30

TACAN OFF Chan 54	APCH CRS 313°	Rwy ldg 10,612 TDZE 985 Arprt Elev 1049	AL-544 [USAF]	OFFUTT AFB (KOFF)
--------------------------	----------------------	--	---------------	-------------------

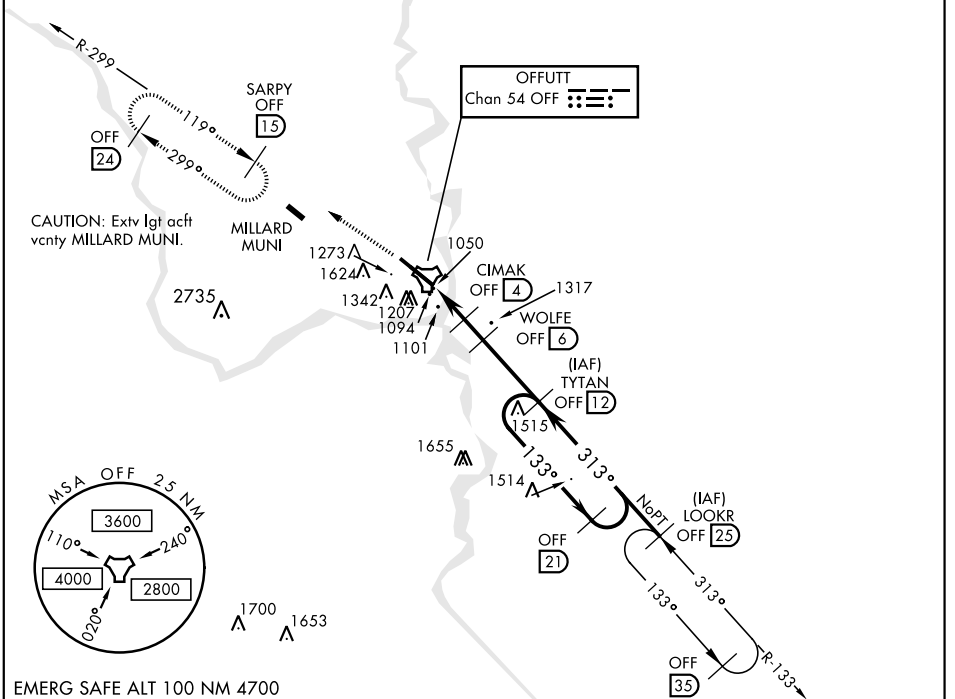
▼ * When ALS inop, increase CAT ABCDE RVR to 55 and vis to 1 mile.
 ** Circling not authorized N of Rwy 12-30.

ALSF-1

MISSED APPROACH: Climb to 3000 via OFF TACAN R-299 to SARPY and hold.

ATIS 126.025 273.5	OMAHA APP CON E 124.5 263.0 W 120.1 354.05	OFFUTT TOWER 123.7 279.625	GND CON 121.7 289.4
------------------------------	--	--------------------------------------	-------------------------------

CAUTION: When Rwy 12 VGSI inop, circling to Rwy 12 not authorized at night.



EMERG SAFE ALT 100 NM 4700

3000 OFF R-299	SARPY OFF 15	↑ WOLFE to COLIB	LOOKR 25	ELEV 1049	TDZE 985
----------------	--------------	------------------	----------	-----------	----------

TACAN	COLIB 1	CIMAK 4	WOLFE 6	TYTAN 12	LOOKR 25
-------	---------	---------	---------	----------	----------

CATEGORY	A	B	C	D	E
S-30*	1360/40		375	(400-¾)	
** CIRCLING	1500-1 451 (500-1)	1600-1 551 (600-1)	1680-1¾ 631 (700-1¾)	1940-3	891 (900-3)

Rwy 12 ldg 10,696'
 Rwy 30 ldg 10,612'
 Rwy 12-30 ALS nstd

TACAN Y RWY 30

NC-2, 12 SEP 2019 to 10 OCT 2019

NC-2, 12 SEP 2019 to 10 OCT 2019