

OMAHA, NEBRASKA

# RNAV (GPS) RWY 12

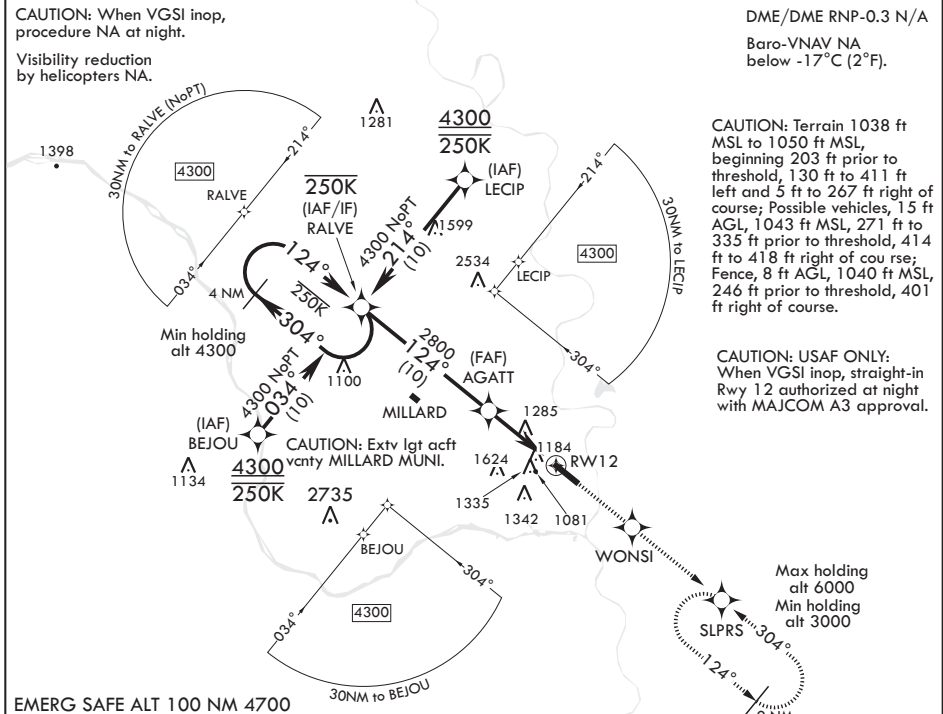
WAAS CH 91358 W12A	APCH CRS 124°	Rwy ldg 10,696	TDZE 1049	Arprt Elev 1049
--------------------------	------------------	-------------------	--------------	--------------------

AL-544 (USAF)

OFFUTT AFB (KOFF)

<p><b>V</b> * When ALS inop, increase all CAT vis to 1 3/8 miles. ** When ALS inop, increase CAT AB RVR to 55, CDE vis to 1 1/2 miles. *** Circling not authorized N of Rwy 12-30.</p>	<p>ALSF-1</p>	<p>MISSED APPROACH: Climb direct to WONSI, then track 124° to SLPRS and hold, maintain 3000.</p>
--	---------------	--

<p>ATIS <b>126.025 273.5</b></p>	<p>OMAHA APP CON/DEP CON <b>120.1 354.05 W</b> <b>124.5 263.0 E</b></p>	<p>TOWER <b>123.7 279.625</b></p>	<p>GND CON <b>121.7 289.4</b></p>
--------------------------------------	---	---------------------------------------	---------------------------------------



EMERG SAFE ALT 100 NM 4700

<p>4300 ← 304°</p> <p>124° →</p> <p>GP 3.05° TCH 51'</p>	<p>3000</p> <p>WONSI</p> <p>tr 124°</p> <p>SLPRS</p> <p>ELEV 1049</p> <p>TDZE 1049</p> <p>HIRL Rwy 12-30</p> <p>124° to RW12</p> <p>1090 BCN 1255</p> <p>TWR 1157</p> <p>11,703 x 150 0.7% DOWN</p>																														
<table border="1"> <tr> <th>CATEGORY</th> <th>A</th> <th>B</th> <th>C</th> <th>D</th> <th>E</th> </tr> <tr> <td>LPV DA</td> <td></td> <td>1299/50</td> <td>250</td> <td colspan="2">(300-1)</td> </tr> <tr> <td>LNAV/VNAV DA*</td> <td></td> <td>1469/50</td> <td>420</td> <td colspan="2">(500-1)</td> </tr> <tr> <td>LNAV MDA**</td> <td>1580/50</td> <td>531 (600-1)</td> <td>1580/55</td> <td>531</td> <td>(600-1)</td> </tr> <tr> <td>CIRCLING***</td> <td>1580-1 531 (600-1)</td> <td>1600-1 551 (600-1)</td> <td>1680-1 3/4 631 (700-1 3/4)</td> <td>1940-3</td> <td>891 (900-3)</td> </tr> </table>	CATEGORY	A	B	C	D	E	LPV DA		1299/50	250	(300-1)		LNAV/VNAV DA*		1469/50	420	(500-1)		LNAV MDA**	1580/50	531 (600-1)	1580/55	531	(600-1)	CIRCLING***	1580-1 531 (600-1)	1600-1 551 (600-1)	1680-1 3/4 631 (700-1 3/4)	1940-3	891 (900-3)	<p>Rwy 12 ldg 10,696'</p> <p>Rwy 30 ldg 10,612'</p> <p>Rwy 12-30 ALS nstd</p>
CATEGORY	A	B	C	D	E																										
LPV DA		1299/50	250	(300-1)																											
LNAV/VNAV DA*		1469/50	420	(500-1)																											
LNAV MDA**	1580/50	531 (600-1)	1580/55	531	(600-1)																										
CIRCLING***	1580-1 531 (600-1)	1600-1 551 (600-1)	1680-1 3/4 631 (700-1 3/4)	1940-3	891 (900-3)																										

OMAHA, NEBRASKA

41°07'N - 95°55'W

OFFUTT AFB (KOFF)

Amdt 2 19JUL18

# RNAV (GPS) RWY 12

NC-2, 12 SEP 2019 to 10 OCT 2019

NC-2, 12 SEP 2019 to 10 OCT 2019