

# HI-ILS or LOC RWY 32

LOC I-LMT <b>109.5</b>	APCH CRS <b>321°</b>	Rwy ldg TDZE Arpt Elev <b>10,301</b> <b>4095</b> <b>4095</b>
---------------------------	-------------------------	---

JAL-473 [USAF]

CRATER LAKE KLAMATH RGNL (KLMT)

▼\* When ALS inop, incr all CAT vis to RVR 40.  
\*\* When ALS inop, incr all CAT vis to RVR 60.



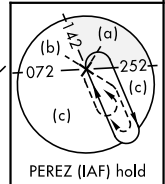
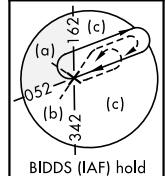
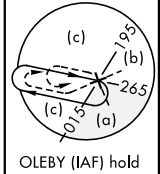
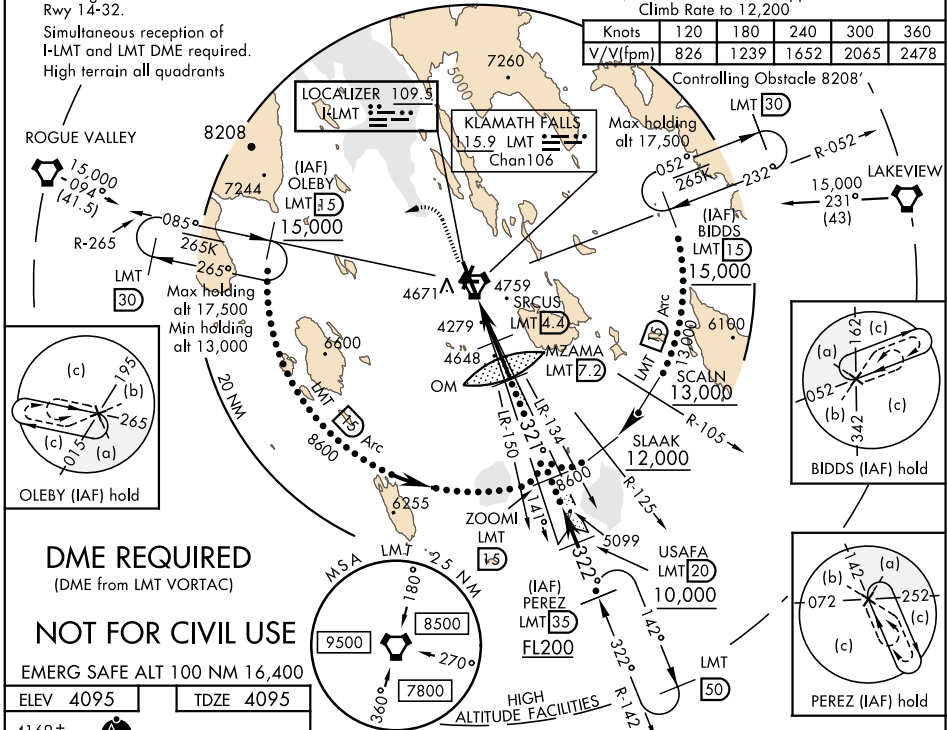
† MISSED APPROACH: Climb to 5300 then climbing left turn to 13,000 hdg 230° and via LMT VORTAC R-265 to OLEBY/15 DME and hold. Cont climb-in hold to 13,000. Missed approach requires min climb of 413'/NM to 12,200.

ATIS <b>126.5 263.0</b>	KINGSLEY APP CON <b>123.675 270.8</b>	KINGSLEY TOWER * <b>133.975 (CTAF) 0 257.8</b>	GND CON <b>121.9 348.6</b>	UNICOM <b>122.95</b>
----------------------------	--	---	-------------------------------	-------------------------

\*\*\* Circling NA for CAT D and E east of Rwy 14-32.  
Simultaneous reception of I-LMT and LMT DME required.  
High terrain all quadrants

† CAUTION: Missed Approach Minimum Climb Rate to 12,200

Knots	120	180	240	300	360
V/V(fpm)	826	1239	1652	2065	2478

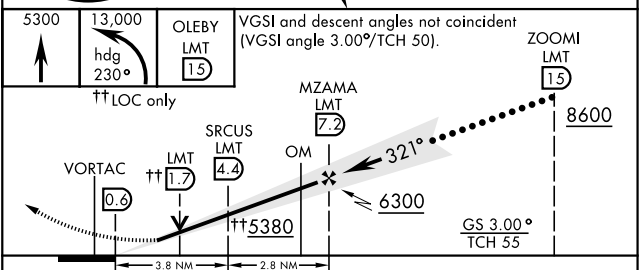
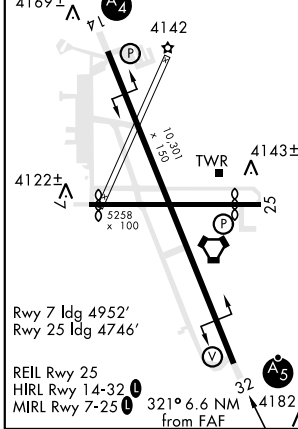


**DME REQUIRED**  
(DME from LMT VORTAC)

**NOT FOR CIVIL USE**

EMERG SAFE ALT 100 NM 16,400

ELEV 4095	TDZE 4095
-----------	-----------



CATEGORY	C	D	E
S-ILS 32*	4295/24	200 (200-½)	
S-LOC 32**	4500/40	405 (500-¾)	
CIRCLING ***	5420-3 1325 (1400-3)	5660-3 1565 (1600-3)	5700-3 1605 (1700-3)

# HI-ILS or LOC RWY 32

NW-1, 12 SEP 2019 to 10 OCT 2019

NW-1, 12 SEP 2019 to 10 OCT 2019