

PERU, INDIANA

# TACAN or VOR RWY 5

VORTAC GUS <b>108.45</b> Chan <b>21 (Y)</b>	APCH CRS <b>052°</b>	Rwy ldg TDZE Arprt Elev <b>12,501</b> <b>811</b> <b>811</b>
---	-------------------------	--

AL-470 [USAF]

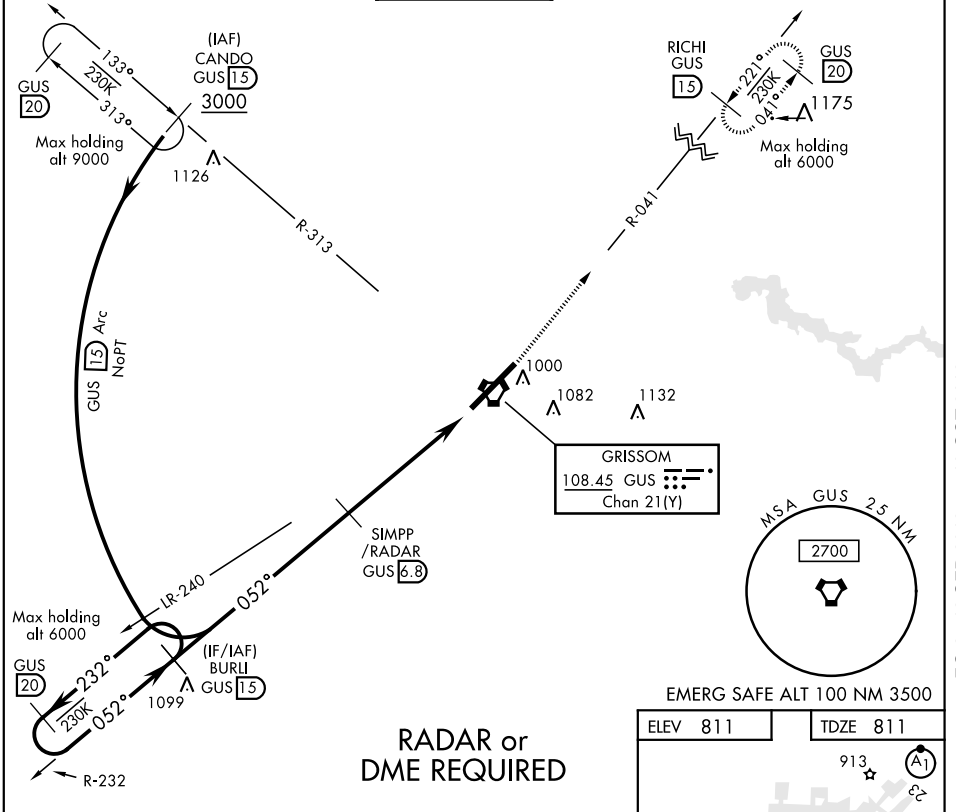
GRISSOM ARB (KGUS)

\* When ALS inop, increase RVR to 55 and vis to 1 mile.

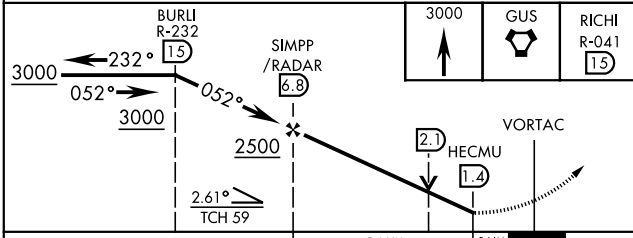


MISSED APPROACH: Climb to 3000 on the GUS VORTAC R-041 to RICHI (GUS R-041/15 DME) and hold.

ATIS <b>108.45 270.8</b>	GRISSOM APP CON <b>121.05 338.275 EAST</b> <b>123.85 291.675 WEST</b>	GRISSOM TOWER ★ <b>133.7 290.45</b>	GND CON <b>128.425 275.8</b>	CLNC DEL <b>123.7 318.2</b>
-----------------------------	---	--	---------------------------------	--------------------------------



### RADAR or DME REQUIRED



ELEV 811	TDZE 811
----------	----------

FAF to MAP 5.4 NM					
Knots	60	90	120	150	180
Min:Sec	5:24	3:36	2:42	2:10	1:48

PERU, INDIANA

40°39'N-86°09'W

GRISSOM ARB (KGUS)

Amdt 8 06DEC18

# TACAN or VOR RWY 5

EC-2, 12 SEP 2019 to 10 OCT 2019

EC-2, 12 SEP 2019 to 10 OCT 2019