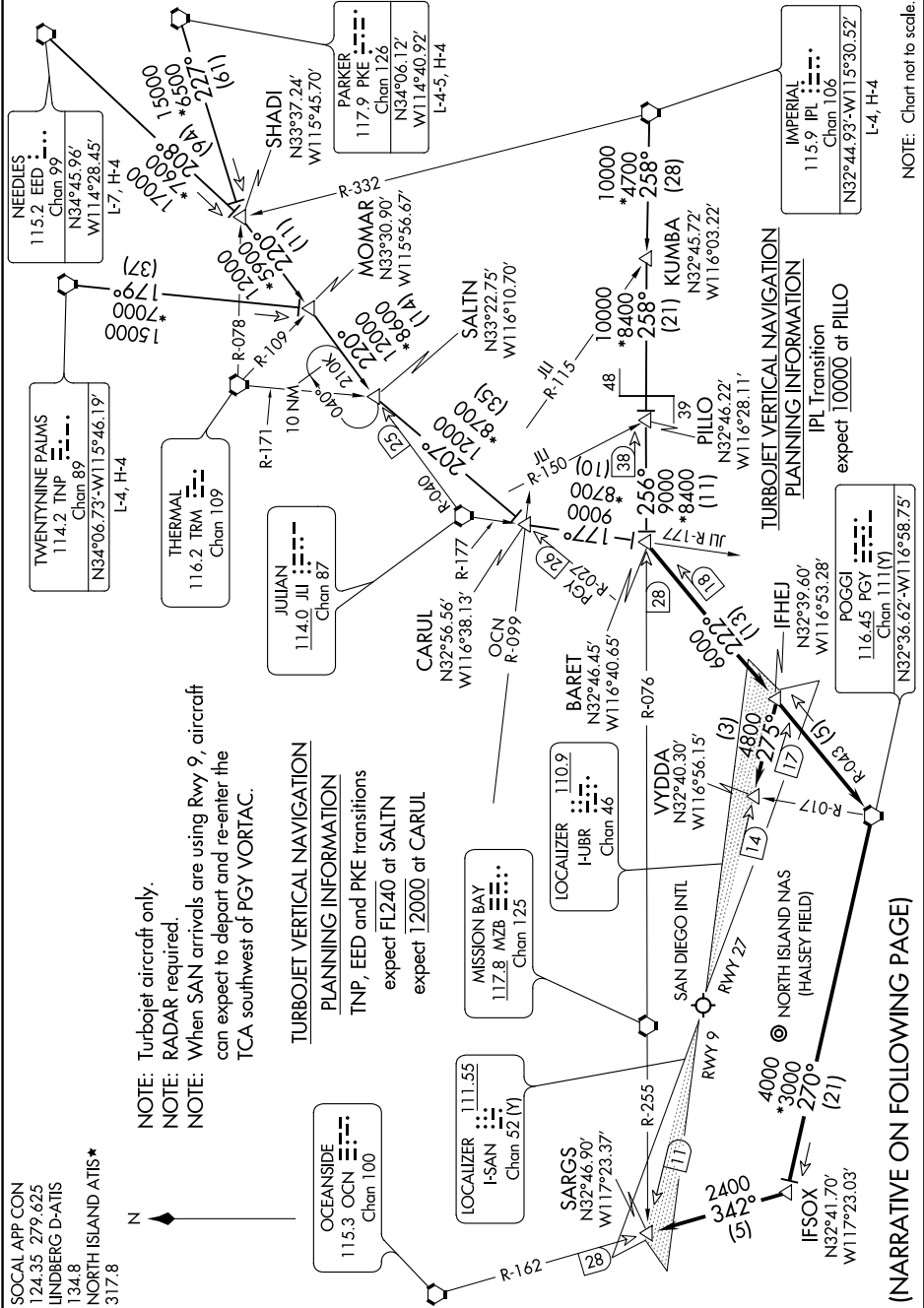


SW-3, 12 SEP 2019 to 10 OCT 2019

SOCAL APP CON  
124.35 Z79.625  
LINDBERG D-ATIS  
134.8  
NORTH ISLAND ATIS\*  
317.8

NOTE: Turbojet aircraft only.  
NOTE: RADAR required.  
NOTE: When SAN arrivals are using Rwy 9, aircraft can expect to depart and re-enter the TCA southwest of PGY VORTAC.

TURBOJET VERTICAL NAVIGATION  
PLANNING INFORMATION  
TNP, EED and PKE transitions  
expect FL240 at SALTN  
expect 12000 at CARUL



(NARRATIVE ON FOLLOWING PAGE)

NOTE: Chart not to scale.

SW-3, 12 SEP 2019 to 10 OCT 2019