


WAAS CH 62810 W02A	APP CRS 019°	Rwy Idg TDZE Apt Elev	5503 21 24
--	------------------------	-----------------------------	---------------------------------------

RNAV (GPS) RWY 2

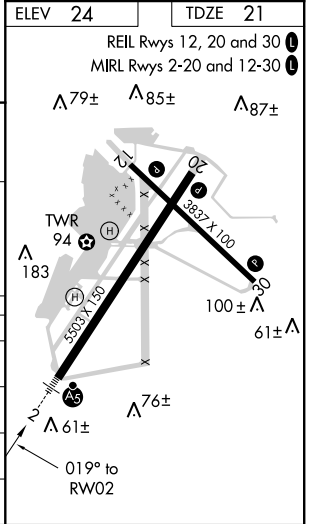
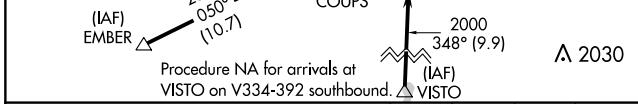
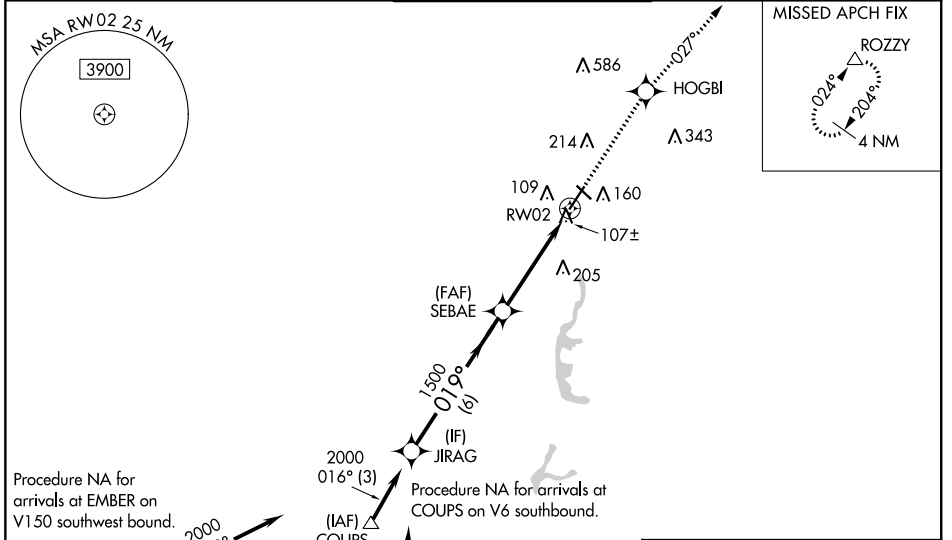
SACRAMENTO EXECUTIVE (SAC)

⚠ Baro-VNAV NA when using Sacramento Intl altimeter setting. For uncompensated Baro-VNAV systems, LNAV/VNAV NA below -15°C (5°F) or above 54°C (130°F). DME/DME RNP-0.3 NA. When local altimeter setting not received, use Sacramento Intl altimeter setting and increase LPV DA to 322; increase LNAV/VNAV DA to 401 and all visibilities 1/8 mile; increase all MDA 40 feet and LNAV Cats C/D visibility 1/8 mile. For inop MALSR, increase LPV all Cats visibility to 1/2. For inop MALSR when using Sacramento Intl altimeter setting, increase LPV all Cats visibility to 1.

MALSR 

MISSED APPROACH: Climb to 3000 direct HOGBI and on track 027° to ROZZY and hold.

ATIS 125.5	NORCAL APP CON 125.25 257.9	EXEC TOWER * 119.5 (CTAF) 0 278.8	GND CON 125.0	UNICOM 122.95
----------------------	---------------------------------------	---	-------------------------	-------------------------



CATEGORY	A	B	C	D
LPV DA		294-1/2	273 (300-1/2)	
LNAV/VNAV DA		373-5/8	352 (400-5/8)	
LNAV MDA	440-1/2	419 (500-1/2)	440-3/4	419 (500-3/4)
CIRCLING	500-1 476 (500-1)	520-1 496 (500-1)	520-1 1/2 496 (500-1 1/2)	580-2 556 (600-2)

SW-2, 12 SEP 2019 to 10 OCT 2019

SW-2, 12 SEP 2019 to 10 OCT 2019