

APP CRS	Rwy Idg	8800
143°	TDZE	1303
	Apt Elev	1335

RNAV (GPS) Y RWY 14

ROGUE VALLEY INTL-MEDFORD (MFR)

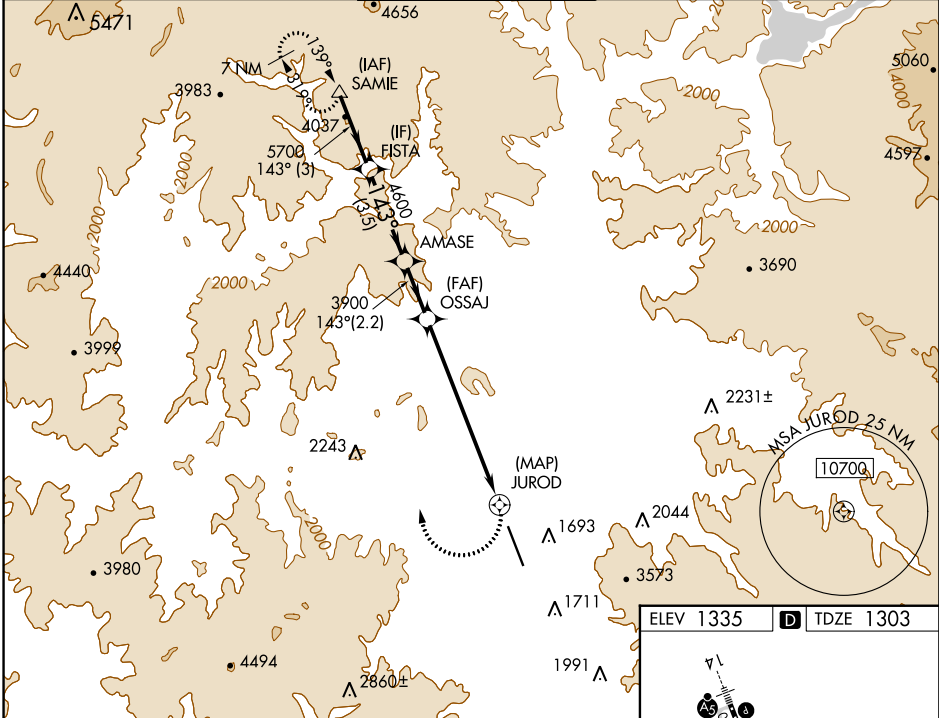
RNP APCH

⚠ Circling NA for Cats C and D northeast of Rwy 14-32.
 When Medford altimeter setting not received, procedure NA.
❄ -5°C Inop table does not apply to Cats C and D.

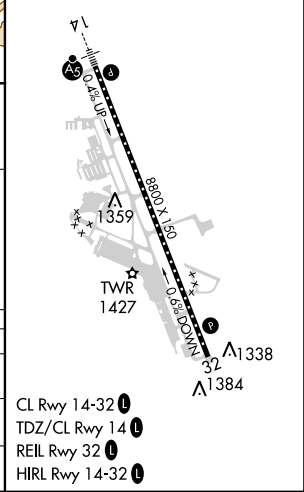
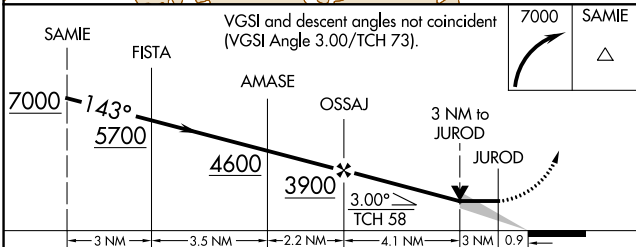
MALSRL

⚠ MISSED APPROACH: Climbing right turn 7000 direct SAMEIE and hold, continue climb-in-hold to 7000.
 * Missed approach requires minimum climb of 334 feet per NM to 4800.

ATIS 127.25	CASCADE APP CON * 124.3 379.9	MEDFORD TOWER * 119.4 (CTAF) 257.8	GND CON 121.8	UNICOM 122.95
-----------------------	---	--	-------------------------	-------------------------



ELEV 1335	D TDZE 1303
-----------	--------------------



CATEGORY	A	B	C	D
LNAV MDA*	2600/40 1297 (1300-¾)	2600/55 1297 (1300-1)	2600-3	1297 (1300-3)
LNAV MDA	2600/40 1297 (1300-¾)	2600/55 1297 (1300-1)	3320-3 2017 (2000-3)	3460-3 2157 (2200-3)
C CIRCLING	2600-1¼ 1265 (1300-1¼)	2600-1½ 1265 (1300-1½)	3320-3 1985 (2000-3)	3460-3 2125 (2200-3)

- CL Rwy 14-32 **Ⓛ**
- TDZ/CL Rwy 14 **Ⓛ**
- REIL Rwy 32 **Ⓛ**
- HIRL Rwy 14-32 **Ⓛ**

NW-1, 12 SEP 2019 to 10 OCT 2019

NW-1, 12 SEP 2019 to 10 OCT 2019