

FALLON, NEVADA

RNAV (GPS) RWY 13R

APCH CRS 131°	Rwy Idg 14,001
	TDZE 3935
	Arprt Elev 3935

AL-143 (USN)

FALLON NAS (VAN VOORHIS FLD) (KNFL)

† MISSED APPROACH: Climb to 9800 direct HOROD and hold. Continue climb-in-hold. Max 175 KIAS until 9800. Missed apch requires minimum climb of 270 ft/nm to 9800.

ATIS* 370.925	NAVY FALLON APP CON/DEP CON 120.85 360.2	NAVY FALLON TOWER* 119.25 340.2	GND CON 251.15	CLNC DEL 353.55	ASR/PAR
-------------------------	--	---	--------------------------	---------------------------	---------

DME/DME RNP-0.3 NA

† CAUTION: Missed Approach
Minimum Climb Rate to 5100

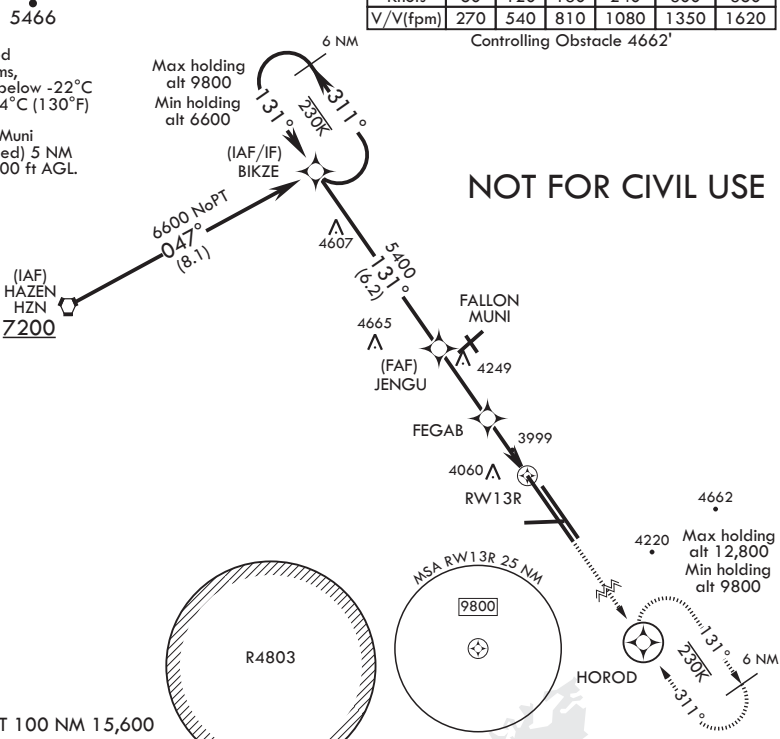
Knots	60	120	180	240	300	360
V/V(fpm)	270	540	810	1080	1350	1620

Controlling Obstacle 4662'

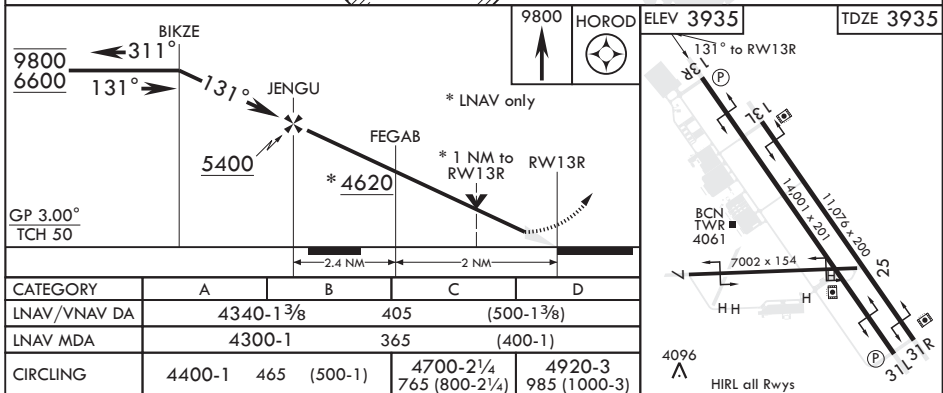
For uncompensated Baro-VNAV systems, LNAV/VNAV NA below -22°C (-7°F) or above 54°C (130°F)

CAUTION: Fallon Muni Airport (uncontrolled) 5 NM NW. Pattern alt 800 ft AGL.

NOT FOR CIVIL USE



EMERG SAFE ALT 100 NM 15,600



FALLON, NEVADA

39°25'N - 118°42'W

FALLON NAS (VAN VOORHIS FLD) (KNFL)

Amdt 3 03JAN19

RNAV (GPS) RWY 13R

SW-4, 12 SEP 2019 to 10 OCT 2019

SW-4, 12 SEP 2019 to 10 OCT 2019