

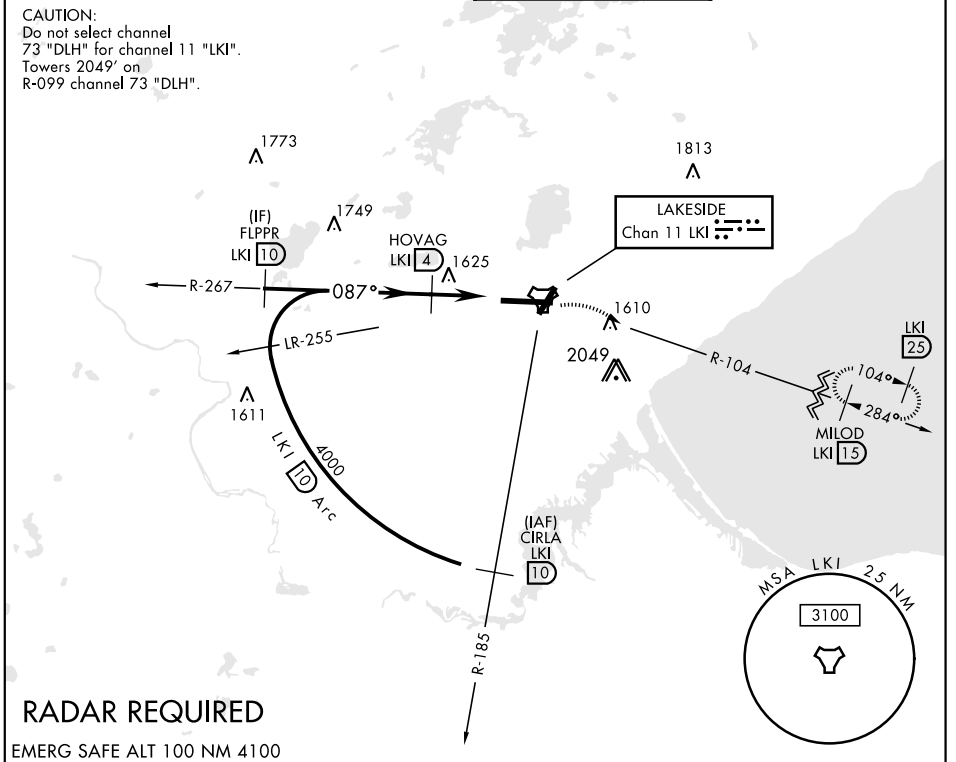
TACAN LKI Chan 11	APCH CRS 087°	Rwy ldg 10,162 THRE 1428 Arpt Elev 1428
----------------------	------------------	---

AL-125 [USAF]

DULUTH INTL (KDLH)

<p>▼</p> <ul style="list-style-type: none"> *When ALS inop, increase CAT E vis to 1½ miles. **Circling NA for CAT E SE of Rwy 3 and 27. 	<p>ALSF-2</p>	<p>MISSED APPROACH: Climb to 2500 then climbing right turn to 4000 via LKI R-104 to MILOD (15'DME) and hold.</p>
---	---------------	--

<p>ATIS</p> <p>124.1 270.1</p>	<p>DULUTH APP CON</p> <p>125.45 233.7</p>	<p>DULUTH TOWER</p> <p>118.3 257.8</p>	<p>GND CON</p> <p>121.9 348.6</p>
--------------------------------	---	--	-----------------------------------

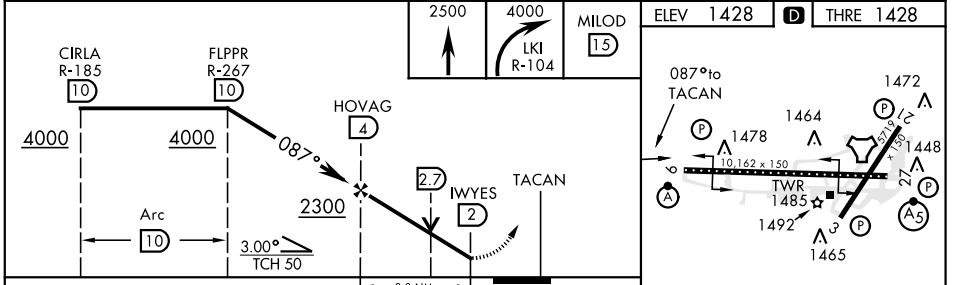


NC-1, 12 SEP 2019 to 10 OCT 2019

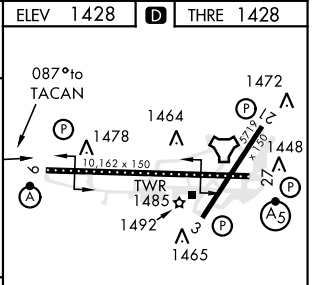
NC-1, 12 SEP 2019 to 10 OCT 2019

RADAR REQUIRED

EMERG SAFE ALT 100 NM 4100



CATEGORY	A	B	C	D	E
S-9*	1880/24 452 (500-½)		1880/45 452 (500-1)		
CIRCLING**	1920-1 492 (500-1)		1920-1½ 492 (500-1½)	1980-2 552 (600-2)	2060-2¼ 632 (700-2¼)



DULUTH, MINNESOTA 46°51'N-92°12'W DULUTH INTL (KDLH)

Amdt 3 19199