

WAAS CH <b>40114</b> W21A	APP CRS <b>213°</b>	Rwy Idg TDZE <b>1420</b> Apt Elev <b>1428</b>
---------------------------------	------------------------	-----------------------------------------------------

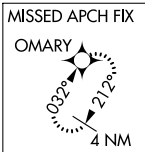
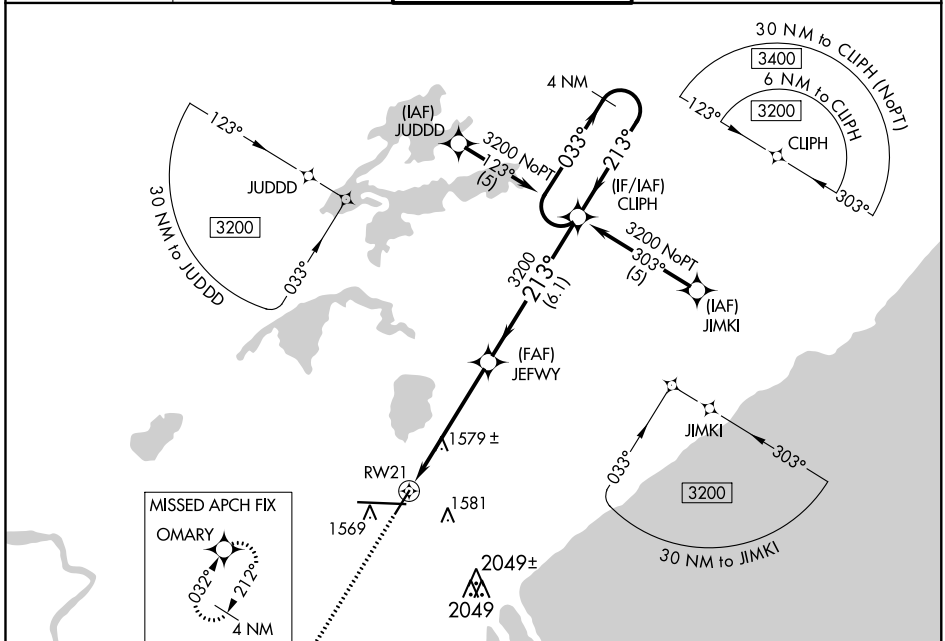
# RNAV (GPS) RWY 21

DULUTH INTL (DLH)

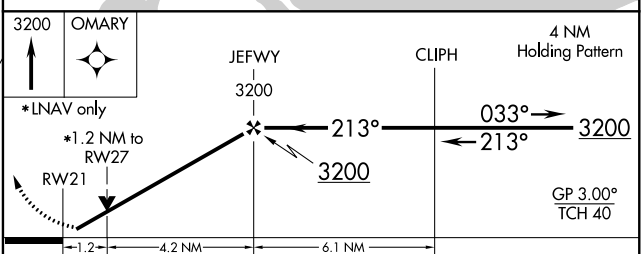
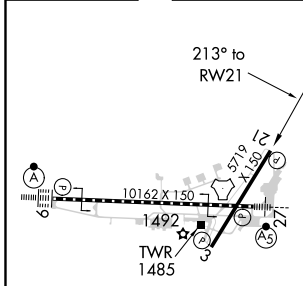
**⚠** For uncompensated Baro-VNAV systems, LNAV/VNAV NA below -17°C (2°F) or above 46°C (115°F). DME/DME RNP-0.3 NA. Rwy 21 helicopter visibility reduction below ¾ SM NA.

**ASR** MISSED APPROACH: Climb to 3200 direct OMARY and hold.

ATIS <b>124.1 270.1</b>	DULUTH APP CON <b>125.45 233.7</b>	DULUTH TOWER <b>118.3 257.8</b>	GND CON <b>121.9 348.6</b>
----------------------------	---------------------------------------	------------------------------------	-------------------------------



ELEV 1428	<b>D</b> TDZE 1420
-----------	--------------------



CATEGORY	A	B	C	D
LPV DA		1708-1	288 (300-1)	
LNAV/VNAV DA		1927-1¾	507 (500-1¾)	
LNAV MDA	1840-1	420 (500-1)	1840-1¼	420 (500-1¼)
<b>C</b> CIRCLING	1880-1 452 (500-1)	1900-1 472 (500-1)	1940-1½ 512 (600-1½)	2400-3 972 (1000-3)

TDZ/CL Rwy 9  
REIL Rwy 3 and 21  
HIRL Rwy 3-21 and 9-27

NC-1, 12 SEP 2019 to 10 OCT 2019

NC-1, 12 SEP 2019 to 10 OCT 2019