

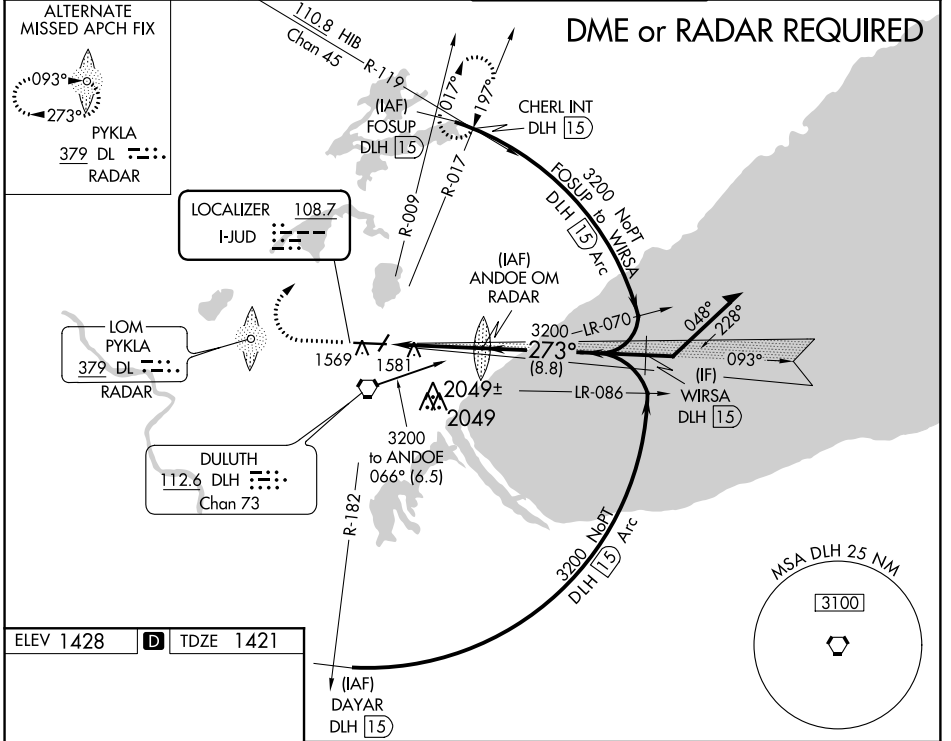
LOC I-JUD 108.7	APP CRS 273°	Rwy ldg 10162 TDZE 1421 Apt Elev 1428
---------------------------	------------------------	--

ILS or LOC RWY 27

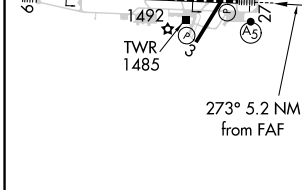
DULUTH INTL (DLH)

Inop table does not apply to S-ILS 27. Circling NA for Cat E southeast of Rwy 3-27. For inop ALS, increase S-LOC 27 Cat E visibility to 1 3/8 SM. ASR	MALSR 	MISSED APPROACH: Climb to 3000 then climbing right turn to 4500 on heading 060° and on DLH VORTAC R-017 to CHERL INT/DLH 15 DME and hold.
--	-----------	---

ATIS 124.1 270.1	DULUTH APP CON 125.45 233.7	DULUTH TOWER 118.3 257.8	GND CON 121.9 348.6
----------------------------	---------------------------------------	------------------------------------	-------------------------------



ELEV 1428	D	TDZE 1421
-----------	----------	-----------



3000	4500	DLH R-017	CHERL INT	ANDOE OM RADAR	Remain within 15 NM
VGS1 and ILS glidepath not coincident (VGS1 Angle 3.00/TCH 96).					
273° 5.2 NM from FAF			3200 GS 3.00° TCH 85		

TDZ/CL Rwy 9 REIL Rwys 3 and 21 HIRL Rwys 3-21 and 9-27 FAF to MAP 5.2 NM					
Knots	60	90	120	150	180
Min:Sec	5:12	3:28	2:36	2:05	1:44

CATEGORY	A	B	C	D	E
S-ILS 27	1621/40	200 (200-3/4)	1651/40	230 (300-3/4)	
S-LOC 27	1860/24	439 (500-1/2)	1860/45	439 (500-3/4)	
<input checked="" type="checkbox"/> CIRCLING	1880-1 452 (500-1)	1900-1 472 (500-1)	1940-1 1/2 512 (600-1 1/2)	2400-3	972 (1000-3)

NC-1, 12 SEP 2019 to 10 OCT 2019

NC-1, 12 SEP 2019 to 10 OCT 2019