

TACAN LKI Chan 11	APCH CRS 087°	Rwy ldg THRE 10,162 Arpt Elev 1428
-------------------	---------------	---------------------------------------

JAL-125 [USAF]

DULUTH INTL (KDLH)

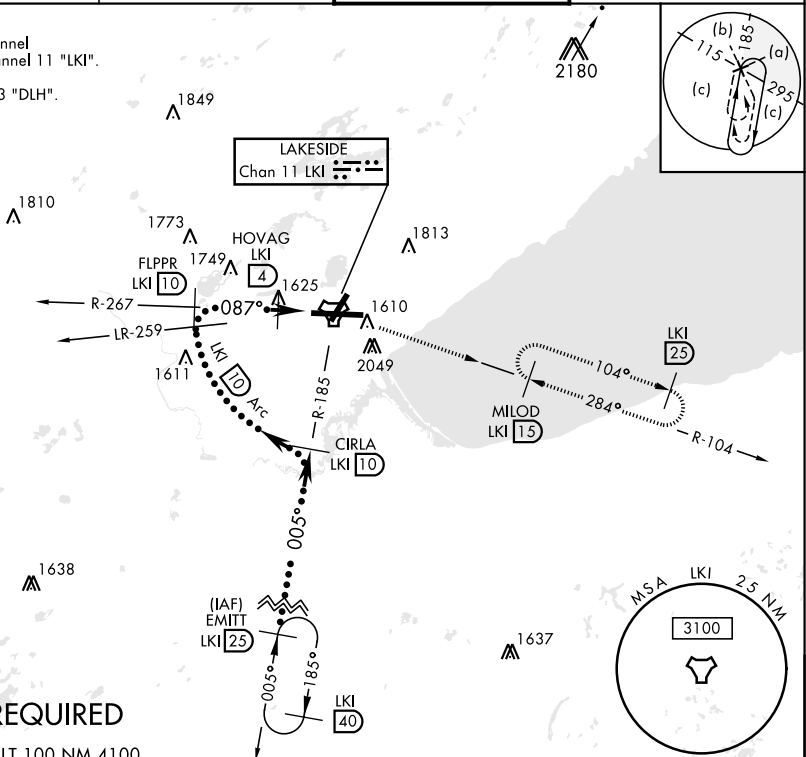
▼ * When ALS inop, increase CAT E vis to 1 1/2 miles.
** Circling NA for CAT E SE of Rwy 3 and 27.



MISSED APPROACH: Climb to 2500 then climbing right turn to 4000 via LKI TACAN R-104 to MILOD (15 DME) and hold.

ATIS 124.1 270.1	DULUTH APP CON 125.45 233.7	DULUTH TOWER 118.3 257.8	GND CON 121.9 348.6
------------------	-----------------------------	--------------------------	---------------------

CAUTION:
Do not select channel 73 "DLH" for channel 11 "LKI".
Towers 2049" on R-099 channel 73 "DLH".



RADAR REQUIRED

EMERG SAFE ALT 100 NM 4100

	2500	4000	MILOD LKI 15	ELEV 1428	D	THRE 1428
CATEGORY	C	D	E			
S-9*	1880/45	452	(500-1)	TDZL/CL Rwy 9-27 REIL Rwy 3 and 21 HIRL Rwy 3-21 and 9-27		
CIRCLING**	1920-1 1/2 492 (500-1 1/2)	1980-2 552 (600-2)	2060-2 1/4 632 (700-2 1/4)			

NC-1, 12 SEP 2019 to 10 OCT 2019

NC-1, 12 SEP 2019 to 10 OCT 2019