

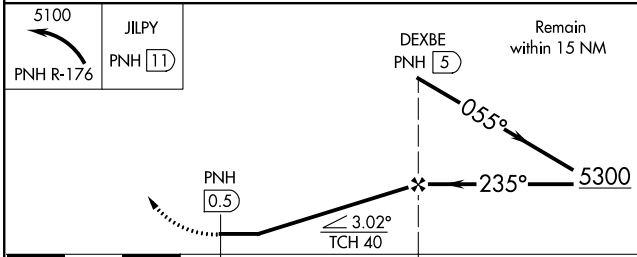
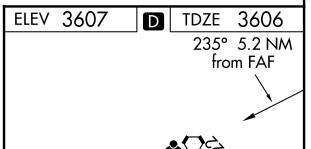
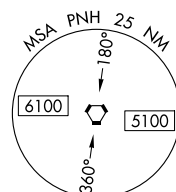
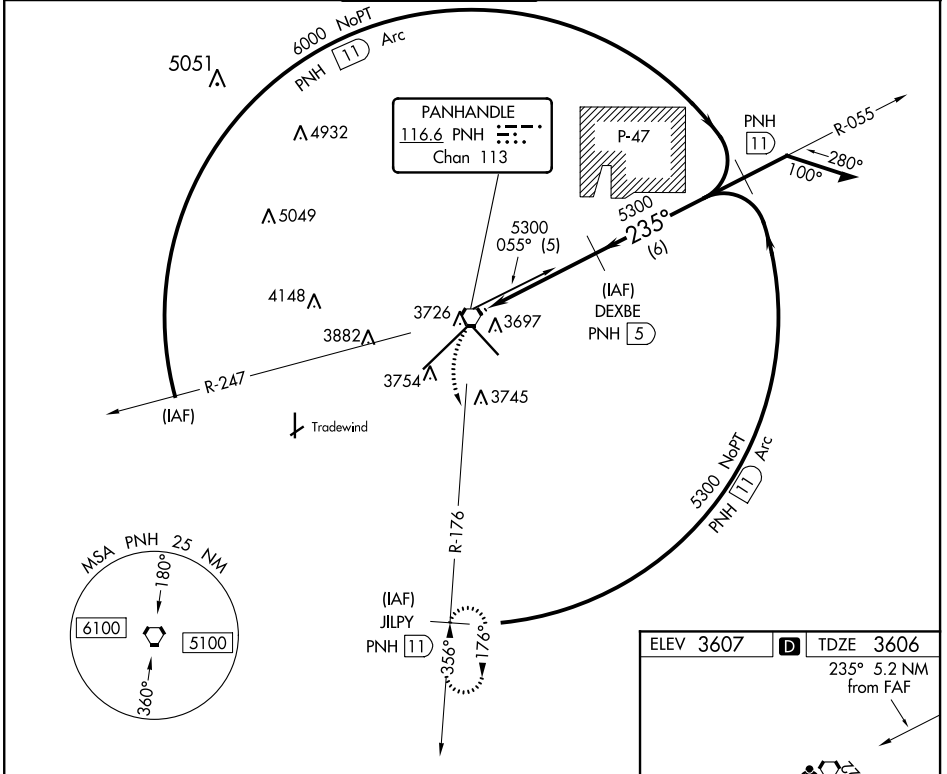
VORTAC PNH 116.6 Chan 113	APP CRS 235°	Rwy Idg 13502 TDZE 3603 Apt Elev 3605
---	------------------------	--

VOR/DME RWY 22

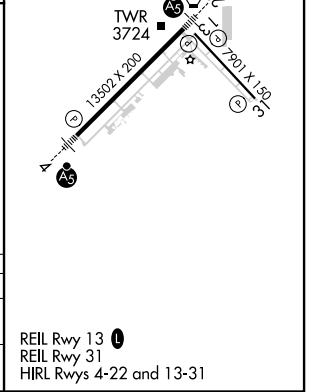
RICK HUSBAND AMARILLO INTL (AMA)

ASR	For inop MALSRs, increase S-22 visibility Cat D and E to 1/4.	MALSR	MISSED APPROACH: Climbing left turn to 5100 via PNH R-176 to JILPY/11 DME and hold.		
------------	---	--------------	---	--	--

ATIS 118.85 350.3	AMARILLO APP CON* 119.5 307.0	AMARILLO TOWER* 118.3(CTAF) 257.9	GND CON 121.9 348.6	CLNC DEL 121.65 239.275	UNICOM 122.95
-----------------------------	---	---	-------------------------------	-----------------------------------	-------------------------



CATEGORY	A	B	C	D	E
S-22	3960-1/2 354 (400+1/2)			3960-1 354 (400-1)	
CIRCLING	4080-1 473 (500-1)	4080-1/2 473 (500-1/2)		4240-2 633 (700-2)	4460-3 853 (900-3)



SC-2, 12 SEP 2019 to 10 OCT 2019

SC-2, 12 SEP 2019 to 10 OCT 2019