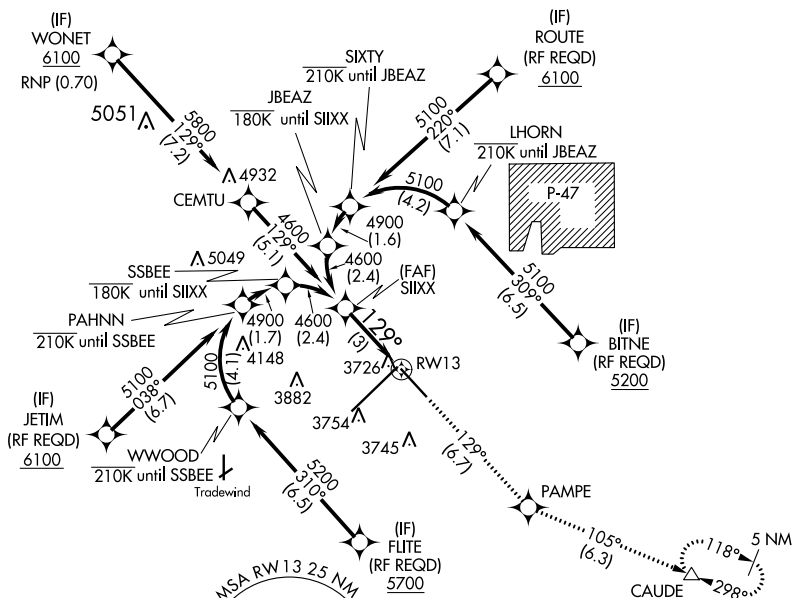


| | | |
|-------------|----------|-------------|
| APP CRS | Rwy Idg | 7901 |
| 129° | TDZE | 3603 |
| | Apt Elev | 3607 |

RNAV (RNP) Z RWY 13

RICK HUSBAND AMARILLO INTL (AMA)

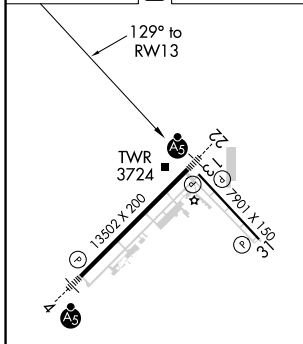
| | | | | | |
|---|--|--|--|--|--|
| <p>For uncompensated Baro-VNAV systems, procedure NA below -14°C (7°F) or above 51°C (124°F). GPS required.</p> | <p>MISSED APPROACH: Climb to 5400 on track 129° to PAMPE and track 105° to CAUDE and hold.</p> | | | | |
| | <p>ATIS</p> <p>118.85 350.3</p> | <p>AMARILLO APP CON*</p> <p>119.5 307.0</p> | <p>AMARILLO TOWER*</p> <p>118.3(CTAF) 257.9</p> | <p>GND CON</p> <p>121.9 348.6</p> | <p>CLNC DEL</p> <p>121.65 239.275</p> |



SC-2, 12 SEP 2019 to 10 OCT 2019

SC-2, 12 SEP 2019 to 10 OCT 2019

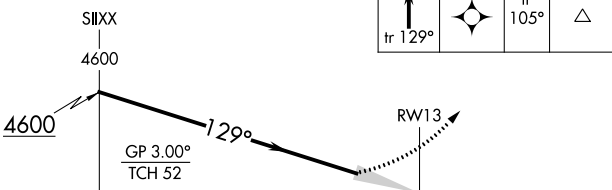
| | | | | |
|------|-------------|----------|------|-------------|
| ELEV | 3607 | D | TDZE | 3603 |
|------|-------------|----------|------|-------------|



RNAV 1 - GPS or RADAR REQUIRED

See planview for multiple IF locations.

| | | |
|---------|---------|-------|
| 5400 | PAMPE | CAUDE |
| ↑ | ✧ | △ |
| tr 129° | tr 105° | |



| | | | | |
|-------------|---|---------|--------------|---|
| CATEGORY | A | B | C | D |
| RNP 0.30 DA | | 3976-1¼ | 373 (400-1¼) | |

AUTHORIZATION REQUIRED

REIL Rwy 13

REIL Rwy 31

HIRL Rwy 4-22 and 13-31